

# POLFLAM VIEW System

## 60 & 120 MINUTE FIRE-RESISTIVE GLAZING WALL

The POLFLAM VIEW system is a fire-rated glazed wall assembly designed for 60- and 120-minute ratings, offering a clean, uninterrupted appearance with no vertical mullions between adjacent fire-resistive glass units. The system installs directly into rated masonry or drywall partitions using specialized glass clamps, and it supports a variety of perimeter trim options.

### POLFLAM VIEW Fire-Resistive Glass

POLFLAM VIEW features a high-quality ceramic edge print, approximately 14 mm (0.55 in.) wide on the vertical edges, to provide a seamless and visually uniform joint between adjacent lites.



### KEY FEATURES

- Interior Use – Ideal for partitions, corridors, and other interior glazed applications
- Frameless Appearance – Clean, uninterrupted design with no vertical framing between glass panes (butt-glazed configuration)
- Fire-Rated – Tested and certified for 60-minute and 120-minute fire-resistance
- Hose Stream Tested – Meets fire-resistance criteria including impact and thermal shock performance
- Thermal Barrier – Effectively blocks radiant and conductive heat transfer
- Third-Party Certified – Listed and tested by Intertek to recognized North American standards
- Butt-Glazed System – No vertical mullions between glass units, ensuring maximum visibility and aesthetics
- Flexible Integration – Compatible with a wide range of perimeter trim and finishing options
- Maximum Transparency – Optimized for natural light and architectural openness
- Fast Lead Times – Competitive pricing with short production and delivery schedules

## Maximum Framing / Glass Sizes:

Fire Rating	Max. Width Framing	Max. Height Framing	Glass Type	Max. Width Glass	Max. Height Glass	Max. Area Glass
60 minutes	Unlimited	120 in. (3.05 m)	POLFLAM VIEW 60	59 1/16 in. (1500 mm)	119 1/2 in. (3036 mm)	7053 sq. in. (4.55 m <sup>2</sup> )
120 minutes	Unlimited	120 in. (3.05 m)	POLFLAM VIEW 120	59 1/16 in. (1500 mm)	119 1/2 in. (3036 mm)	7053 sq. in. (4.55 m <sup>2</sup> )

## Technical Specifications of Fire-Resistive Glass:

POLFLAM VIEW	60	120
Nominal thickness	1 1/2 in. (38 mm)	1 15/16 in. (50 mm)
Thickness tolerance	±1/8 in. (±3 mm)	±1/8 in. (±3 mm)
Weight	15.4 lbs/ft <sup>2</sup> 75 kg/m <sup>2</sup>	18.4 lbs/ft <sup>2</sup> 90 kg/m <sup>2</sup>
Fire-Resistance Rating	60 min	120 min.
Certification	Intertek	Intertek
Listing Standard	UL 263, ASTM E119, CAN/ULC S101 and EN 1364-1	UL 263, ASTM E119, CAN/ULC S101 and EN 1364-1
Visible Light Transmittance	84%	81%
U-Value [Btu/h·ft <sup>2</sup> ·F]	0.62 (Winter) 0.58 (Summer)	0.51 (Winter) 0.48 (Summer)
STC Rating	42	46
Impact Safety Compliance	CPSC 16 CFR 1201 (Category II) ANSI Z97.1 (Class A)	CPSC 16 CFR 1201 (Category II) ANSI Z97.1 (Class A)
Storage & Transport Temperature	-40°F to +122°F	-40°F to +122°F

*Optional with Low-Iron glass*

## Precision Edge Detailing for Seamless Aesthetics

POLFLAM VIEW fire-resistive glass is fabricated with all edges ground smooth for safe handling and clean integration. A high-quality ceramic edge print, approximately 14 mm (0.55 in.) wide on the vertical edges, ensures a visually seamless connection between adjacent panes – ideal for modern, uninterrupted glazed wall applications.

All POLFLAM VIEW fire-resistive glass is permanently laser-marked for full traceability and compliance.



### Listings:

Classified and labeled by INTERTEK

Spec ID 89993 - Design No. PSZ/FGP 60-06 (60 minute rating)

Spec ID 89993 - Design No. PSZ/FGP 120-06 (120 minute rating)

Tests performed in accordance with UL 263 / ASTM E119 / CAN/ULC S101



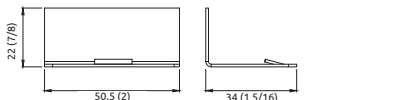
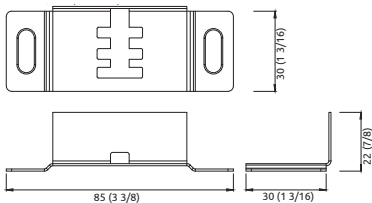
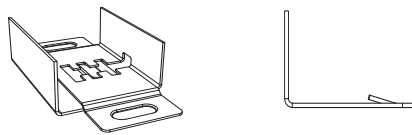
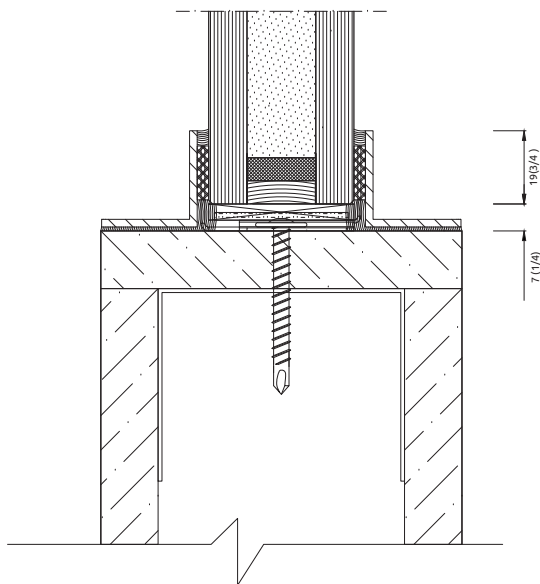
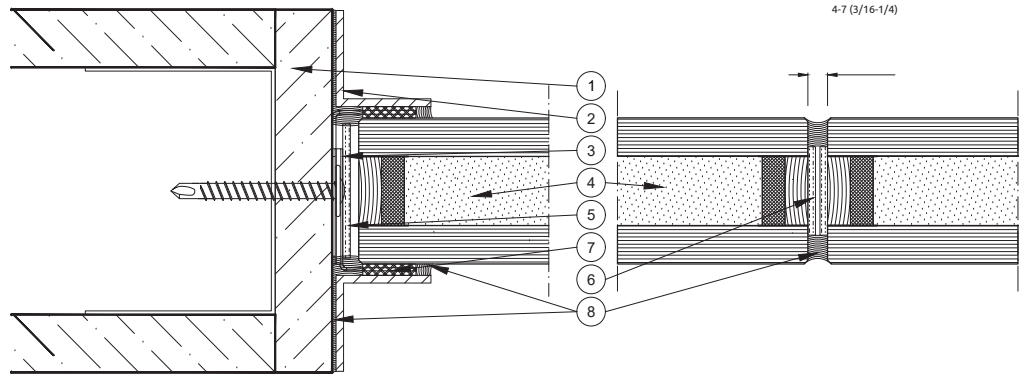
16 CFR 1201 II  
ANSI Z97.1-2015  
CAN/CGSB 12.1-2022  
3/8 U A SGCC 10062  
UL 263  
W-60



16 CFR 1201 II  
ANSI Z97.1-2015  
CAN/CGSB 12.1-2022  
3/8 U A SGCC 10062  
UL 263  
W-120

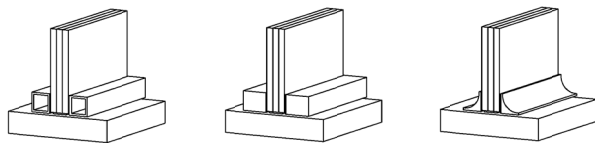


**POLFLAM VIEW 60**  
**Spec ID 89993**  
**Design No. PSZ/FGP 60-06**  
**(60 minute rating)**



[mm (in.)]

1. **SUPPORTING WALL ASSEMBLY:** Min. 1 hour fire rated masonry or dry-wall assembly.
2. **STEEL ANGLE:** Install 25 mm x 25 mm x 2 mm (1 in. x 1 in. x 3/32 in.) thick steel angle, perimetrically on all sides using non-fire-rated neutral silicone sealant (Ref: DOWSIL 791).  
**NOTE** – Cross section may vary.  
 Allowed materials: structural-grade steel, aluminum, engineered wood products (e.g., hardwood or plywood where applicable), PVC, epoxy composites.  
 Allowed Finishes: enamel paint, powder coat or anodized.



3. **GLASS CLAMP:** Install 85 mm (3 3/8 in.) long x 40 mm (1 9/16 in.) wide Stainless Steel Glass Clamps using two Ø3.9 x 45 mm (#8 x 1 7/8 in.) screws with washer M5, 100 mm (3 5/16 in.) from the corners, and 325 mm (12 3/4 in.) max. on center (oc) distance horizontally and 354 mm (13 7/8 in.) max. oc distance vertically.  
**NOTE** – Adjustable glass clamps are allowed to increase adequately on width to adapt to total glass pane thickness. This also applies when total thickness is increased by additional DGU or TGU.
4. **CERTIFIED MANUFACTURER:** Polflam Sp. z o.o.

**CERTIFIED PRODUCT: POLFLAM VIEW 60**

**FIRE RESISTANT GLAZING PANES:** Install Listed 1 Hour Fire-Resistance Rated POLFLAM VIEW 60, 38 mm (1 1/2 in.) thick glazing panes from Polflam Sp. z o.o. in the following max. size:

**Max. Width: 1500 mm (59 1/16 in.)**

**Max. Height: 3036 mm (119 1/2 in.)**

**Max. Area: 4.55 m<sup>2</sup> (7053 sq. in.)**

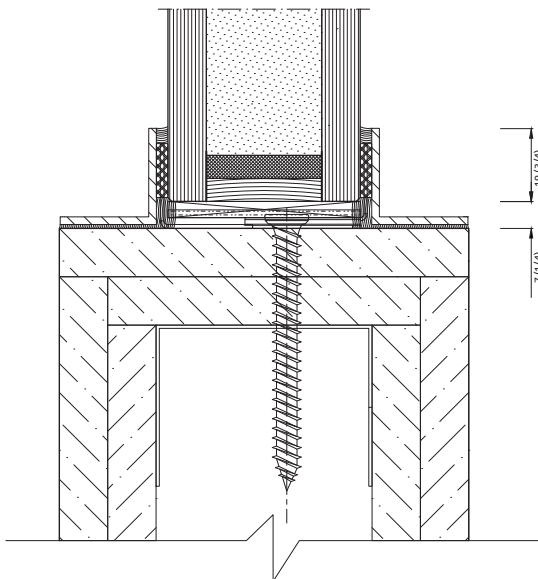
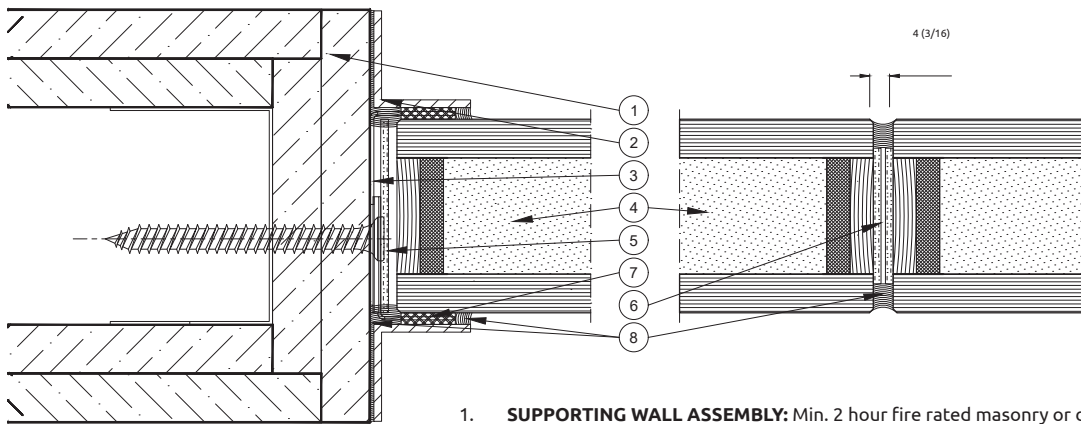
Apart from the original rectangular pane shape with vertical joint, alternative shapes are allowed on condition that: the whole shape is covered by maximal size allowed, consecutive panes will be only joint by vertical butt-joint so no external tension is distributed on glass edges, bottom edge of the glass pane is horizontal.

The glazing panes are installed on nominal 5 mm ± 2 mm (3/16 in. ± 3/32 in.) thick, 100 mm (3 7/8 in.) x 50 mm (1 15/16 in.) hardwood glazing supports, placed at 150 mm (5 7/8 in.) from the bottom corners of the glazing panes. Nominal butt-joint gap-width between the glazing panes is from 4 to 7 mm (3/16 in. to 1/4 in.).

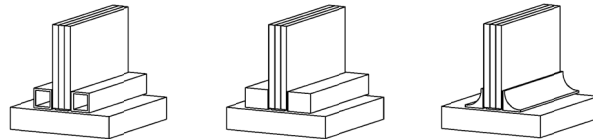
**NOTE** – DGU & TGU glazing panes are allowed. DGU & TGU glazing panes must be positioned with non-fire glass towards the unexposed side of the assembly.

5. **INTUMESCENT TAPE 1:** Install 35 mm (1 3/8 in.) wide x 2 mm (3/32 in.) thick intumescent strip (ref: KERAFIX® FXL 200) all around between the glazing pane edge and supporting construction.
6. **INTUMESCENT TAPE 2:** Install 25 mm (1 in.) wide x 2 mm (3/32 in.) thick intumescent strip (ref: KERAFIX® FXL 200) on the vertical joints between the glazing panes, one on each pane.
7. **CERAMIC TAPE:** Install 15 mm (19/32 in.) wide x 3 mm (1/8 in.) thick ceramic tape (Ref: KERAFIX® 2000) between the steel angles and glazing panes.
8. **SEALANT:** Install **non-fire-rated** neutral silicone sealant (Ref: DOWSIL 791) between steel angles and the supporting construction, between steel angles and the glazing panes, and on vertical joints between the glazing panes.

**POLFLAM VIEW 120**  
**Spec ID 89993**  
**Design No. PSZ/FGP 120-06**  
**(120 minute rating)**



- SUPPORTING WALL ASSEMBLY:** Min. 2 hour fire rated masonry or dry-wall assembly.
- STEEL ANGLE:** Install 25 mm x 25 mm x 2 mm (1 in. x 1 in. x 3/32 in.) thick steel angle, perimetrically on all sides using non-fire-rated neutral silicone sealant (Ref: DOWSIL 791).  
**NOTE – Cross section may vary.**  
 Allowed materials: structural-grade steel, aluminum, engineered wood products (e.g., hardwood or plywood where applicable), PVC, epoxy composites.  
 Allowed Finishes: enamel paint, powder coat or anodized.



- GLASS CLAMP:** Install 85 mm (3 3/8 in.) long x 52 mm (2 1/16 in.) wide Stainless Steel Glass Clamps using two Ø3.9 x 45 mm (#8 x 1 7/8 in.) screws with washer M5, 100 mm (3 5/16 in.) from the corners, and 325 mm (12 3/4 in.) max. on center (oc) distance horizontally and 354 mm (13 7/8 in.) max. oc distance vertically.  
**NOTE – Adjustable glass clamps are allowed to increase adequately on width to adapt to total glass pane thickness. This also applies when total thickness is increased by additional DGU or TGU.**

- CERTIFIED MANUFACTURER: Polflam Sp. z o.o.**  
**CERTIFIED PRODUCT: POLFLAM VIEW 120**

**FIRE RESISTANT GLAZING PANES:** Install Listed 2 Hour Fire-Resistance Rated POLFLAM VIEW 120, 50 mm (1 15/16 in.) thick glazing panes from Polflam Sp. z o.o. in the following max. size:

**Max. Width: 1500 mm (59 1/16 in.)**

**Max. Height: 3036 mm (119 1/2 in.)**

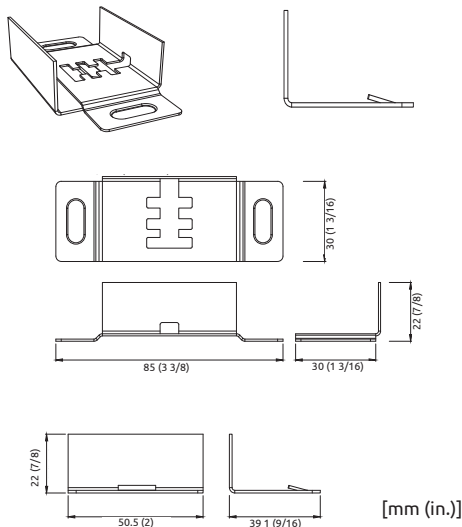
**Max. Area: 4.55 m<sup>2</sup> (7053 sq. in.)**

Apart from the original rectangular pane shape with vertical joint, alternative shapes are allowed on condition that: the whole shape is covered by maximal size allowed, consecutive panes will be only joint by vertical butt-joint so no external tension is distributed on glass edges, bottom edge of the glass pane is horizontal.

The glazing panes are installed on nominal 5 mm ± 2 mm (3/16 in. ± 3/32 in.) thick, 100 mm (3 7/8 in.) x 50 mm (1 15/16 in.) hardwood glazing supports, placed at 150 mm (5 7/8 in.) from the bottom corners of the glazing panes. Nominal butt-joint gap-width between the glazing panes is 4 mm (3/16 in.).

Note – DGU & TGU glazing panes are allowed. DGU & TGU glazing panes must be positioned with non-fire glass towards the unexposed side of the assembly.

- INTUMESCENT TAPE 1:** Install 50 mm (1 15/16 in.) wide x 2 mm (3/32 in.) thick intumescent strip (ref: KERAFIX® FXL 200) all around between the glazing pane edge and supporting construction.
- INTUMESCENT TAPE 2:** Install 35 mm (1 3/8 in.) wide x 2 mm (3/32 in.) thick intumescent strip (ref: KERAFIX® FXL 200) on the vertical joints between the glazing panes, one on each pane.
- CERAMIC TAPE:** Install 15 mm (19/32 in.) wide x 3 mm (1/8 in.) thick ceramic tape (Ref: KERAFIX® 2000) between the steel angles and glazing panes.
- SEALANT:** Install non-fire-rated neutral silicone sealant (Ref: DOWSIL 791) between steel angles and the supporting construction, between steel angles and the glazing panes, and on vertical joints between the glazing panes.



*NOTE: Details not to scale. The information provided herein is for reference only and is subject to change without notice.*