

FIRE-RATED GLAZING SYSTEMS PRODUCT CATALOG – NORTH AMERICA



POLFLAM[®]
FIRE RATED SYSTEMS

Glazing

STL

STL Door

STL CW

VIEW

Classic

Timber



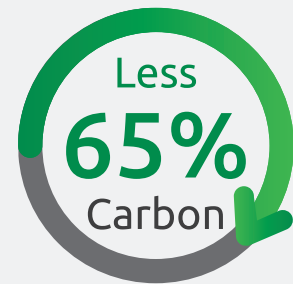
POLFLAM GAIA

World's First **Low-Carbon** Fire-Resistive Glass

What is POLFLAM GAIA?

POLFLAM GAIA sets a new benchmark as the world's first low-carbon fire-resistive glass, uniting **POLFLAM**'s proven hydrogel technology with low-carbon float glass to meet the growing demand for high-performance, environmentally responsible building envelopes.

Up to 65% less embodied carbon*

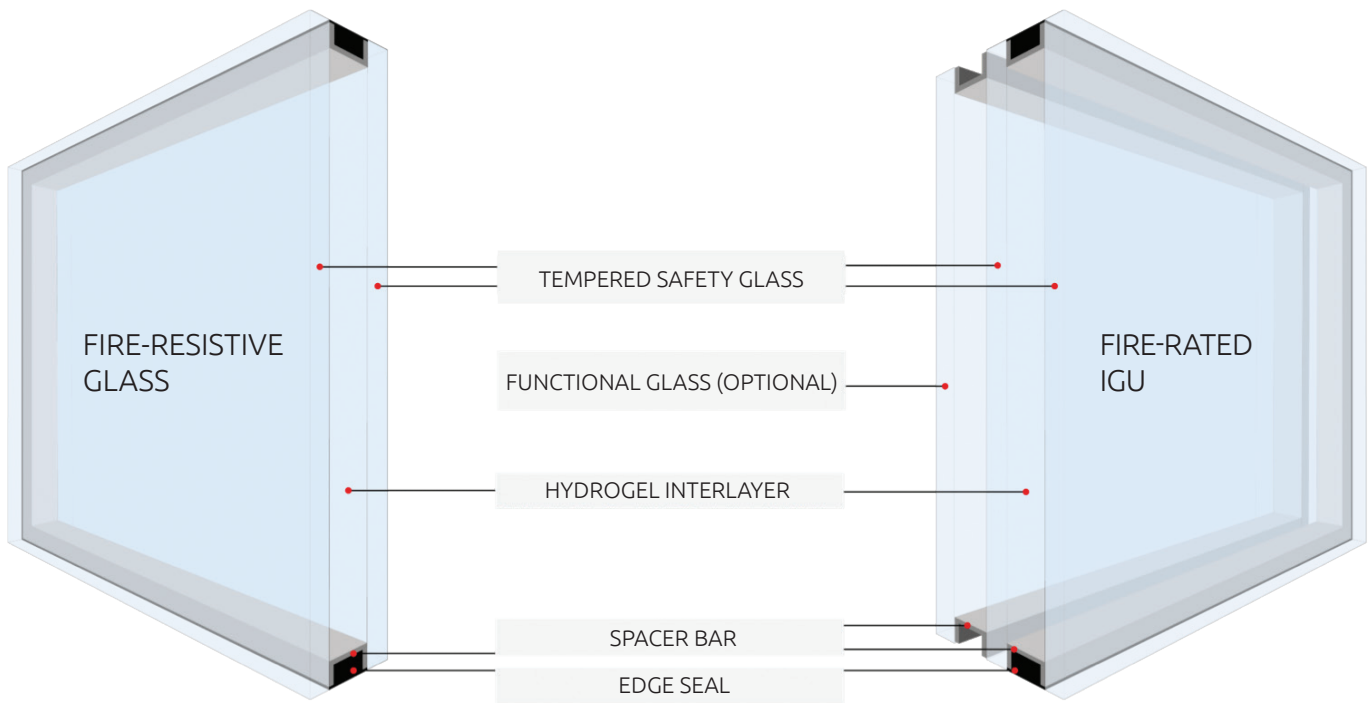


Benefits of POLFLAM GAIA

- Up to 65% lower embodied carbon for reduced environmental impact.
- Designed for green buildings, supporting low-carbon design strategies.
- Same certified fire performance and quality as standard POLFLAM fire-resistive glass.
- Color-neutral, uncompromised aesthetics, matching standard clear glass.
- Supports LEED and other green building certifications.
- Comprehensive fire ratings from 60 to 120 minutes, with IGU options coming soon!

* Compared to regular fire-resistive glass products, depending on fire ratings.

POLFLAM Fire-Resistive Glass



POLFLAM fire-resistive glass has been trusted across Europe for over 20 years. POLFLAM Fire-Rated Glazing Systems deliver unmatched clarity, quality, and fire protection. From Steel Partitions, Doors and Curtain Walls to Timber, View, and Classic, we offer a complete portfolio of systems to meet any architectural need.

- Tested and certified with Intertek for proven reliability.
- Largest glass sizes on the market, with flexibility for custom testing.
- Crystal-clear, multifunctional glass of the highest quality.
- Versatile systems to meet both performance and aesthetic goals.
- Exceptional customer support from start to finish.

POLFLAM Fire-Rated Glazing Systems - The reliable choice for safety, clarity, and design freedom.



POLFLAM 60 FIRE-RESISTIVE GLAZING

POLFLAM	60
Application	Interior
Nominal thickness	1 3/16 in. (30 mm)
Thickness tolerance	±1/16 in. (±2 mm)
Weight	10.6 lbs/ft ² 52 kg/m ²
Fire-Resistance Rating	60 min.
Certification	Intertek
Listing Standard	UL 263, ASTM E119, CAN/ULC S101, EN 1364-1, CAN / ULC S104, UL 10(b), UL 10(c), NFPA 252
Max. Glass Dimension	Width / Height: 118 1/8 in. (3000 mm) Area: 6975 sq. in. (4.50 m ²)
Visible Light Transmittance	86%
U-Value [Btu/h·ft ² ·F]	0.64 (Winter) 0.60 (Summer)
STC Rating	43 dB
Impact Safety Compliance	CPSC 16 CFR 1201 (Category II) ANSI Z97.1 (Class A)
SGCC Certification	10060
Storage & Transport Temperature	-40°F to +122°F



POLFLAM 90 FIRE-RESISTIVE GLAZING

POLFLAM	90
Application	Interior
Nominal thickness	1 7/16 in. (37 mm)
Thickness tolerance	±1/8 in. (±3 mm)
Weight	12.5 lbs/ft ² 61 kg/m ²
Fire-Resistance Rating	90 min.
Certification	Intertek
Listing Standard	UL 263, ASTM E119, CAN/ULC S101, EN 1364-1, CAN / ULC S104, UL 10(b), UL 10(c), NFPA 252
Max. Glass Dimension	Width / Height: 118 1/8 in. (3000 mm) Area: 6975 sq. in. (4.50 m ²)
Visible Light Transmittance	86%
U-Value [Btu/h·ft ² ·F]	0.57 (Winter) 0.53 (Summer)
STC Rating	44 dB
Impact Safety Compliance	CPSC 16 CFR 1201 (Category II) ANSI Z97.1 (Class A)
SGCC Certification	10060
Storage & Transport Temperature	-40°F to +122°F

Glazing

STL

STL Door

STL CW

VIEW

Classic

Timber



POLFLAM 120 FIRE-RESISTIVE GLAZING

POLFLAM	120
Application	Interior
Nominal thickness	1 5/8 in. (42 mm)
Thickness tolerance	±1/8 in. (±3 mm)
Weight	13.7 lbs/ft ² 67 kg/m ²
Fire-Resistance Rating	120 min.
Certification	Intertek
Listing Standard	UL 263, ASTM E119, CAN/ULC S101 and EN 1364-1
Max. Glass Dimension	Width / Height: 118 1/8 in. (3000 mm) Area: 6975 sq. in. (4.50 m ²)
Visible Light Transmittance	84 %
U-Value [Btu/h·ft ² ·F]	0.52 (Winter) 0.49 (Summer)
STC Rating	45 dB
Impact Safety Compliance	CPSC 16 CFR 1201 (Category II) ANSI Z97.1 (Class A)
SGCC Certification	10060
Storage & Transport Temperature	-40°F to +122°F



POLFLAM VIEW 60 FIRE-RESISTIVE GLAZING

POLFLAM VIEW	60
Application	Interior
Nominal thickness	1 1/2 in. (38 mm)
Thickness tolerance	±1/8 in. (±3 mm)
Weight	15.4 lbs/ft ² 75 kg/m ²
Fire-Resistance Rating	60 min.
Certification	Intertek
Listing Standard	UL 263, ASTM E119, CAN/ULC S101 and EN 1364-1
Max. Glass Dimension	Width: 59 1/16 in. (1500 mm) Height: 119 1/2 in. (3036 mm) Area: 7053 sq. in. (4.55 m ²)
Visible Light Transmittance	84 %
U-Value [Btu/h·ft ² ·F]	0.62 (Winter) 0.58 (Summer)
STC Rating	42 dB
Impact Safety Compliance	CPSC 16 CFR 1201 (Category II) ANSI Z97.1 (Class A)
SGCC Certification	10062
Storage & Transport Temperature	-40°F to +122°F

Glazing

STL

STL Door

STL CW

VIEW

Classic

Timber



POLFLAM VIEW 120 FIRE-RESISTIVE GLAZING

POLFLAM VIEW	120
Application	Interior
Nominal thickness	1 15/16 in. (50 mm)
Thickness tolerance	±1/8 in. (±3 mm)
Weight	18.4 lbs/ft ² 90 kg/m ²
Fire-Resistance Rating	120 min.
Certification	Intertek
Listing Standard	UL 263, ASTM E119, CAN/ULC S101 and EN 1364-1
Max. Glass Dimension	Width: 59 1/16 in. (1500 mm) Height: 119 1/2 in. (3036 mm) Area: 7053 sq. in. (4.55 m ²)
Visible Light Transmittance	81 %
U-Value [Btu/h·ft ² ·F]	0.51 (Winter) 0.48 (Summer)
STC Rating	46 dB
Impact Safety Compliance	CPSC 16 CFR 1201 (Category II) ANSI Z97.1 (Class A)
SGCC Certification	10062
Storage & Transport Temperature	-40°F to +122°F

SGCC CERTIFICATION FOR IMPACT SAFETY COMPLIANCE



safety glazing
certification council

Administrative Office, AMS, Inc.
205 West Main Street, PO Box 730
Sackets Harbor, NY 13685
Phone: (315) 646-2234
E-mail: SGCC@ams-cert.com



ACKNOWLEDGEMENT OF CERTIFICATION

THIS IS TO ACKNOWLEDGE THAT AS OF THIS DATE

Polflam Sp. zo.o.
Tarczyn, Mazowieckie

IS A CURRENT LICENSEE AND HAS MET ALL GUIDELINES AND REQUIREMENTS FOR THE SGCC® CERTIFICATION PROGRAM AND AS SUCH IS ELIGIBLE TO LABEL THE BELOW INDICATED PRODUCT(S) AS SGCC® CERTIFIED. REPRESENTATIVE SAMPLES OF THE BELOW PRODUCTS HAVE BEEN FOUND TO BE IN COMPLIANCE WITH ANSI Z97.1-2015 AS INDICATED AND CPSC 16 CFR 1201 STANDARDS, KNOWN AS COMPOSITE CERTIFICATION (COMP), OR BOTH STANDARDS WITH CAN/CGSB 12.1-2022 KNOWN AS COMP+CAN.

Tempered Transparent Glass

<u>SGCC#</u>	<u>IN</u>	<u>MM</u>	<u>Attributes</u>	<u>Type Code</u>	<u>Max Size</u>	<u>ANSI Class</u>	<u>Test Std</u>
10058	5/32	4		TTG	U	A	COMP+CAN
10059	3/16	5		TTG	U	A	COMP+CAN
10060	1/4	6		TTG	U	A	COMP+CAN
10061	5/16	8		TTG	U	A	COMP+CAN
10062	3/8	10		TTG	U	A	COMP+CAN
10063	1/2	12		TTG	U	A	COMP+CAN

THIS SGCC® PROGRAM CERTIFICATION IS CURRENT AND IN FULL EFFECT AS OF THIS ISSUE DATE. CERTIFICATION IN THE SGCC® PROGRAM IS SUBJECT TO SEMI-ANNUAL RENEWAL. PLEASE CHECK THE SGCC WEBSITE AT WWW.SGCC.ORG OR THIS OFFICE FOR MOST CURRENT INFORMATION.

Friday, January 9, 2026
DATE OF ISSUE

F26
CERTIFICATION PERIOD

ADMINISTRATIVE MANAGER

SD-13 7/1/2024

Glazing

STL

STL Door

STL CW

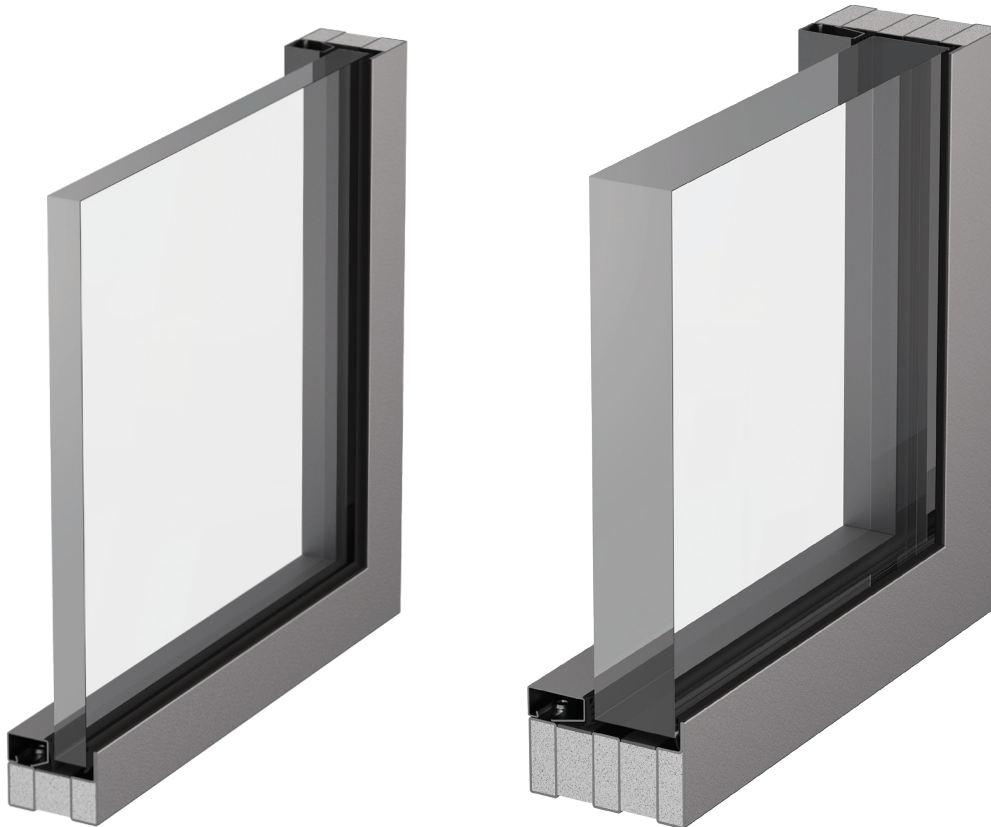
VIEW

Classic

Timber

POLFLAM STL System

60 & 120 MINUTE FIRE-RESISTIVE GLAZING WALL



The POLFLAM STL 60 & 120 fire-rated systems combine sleek, slim-profile steel framing with the unmatched performance of POLFLAM fire-resistive glass and POLFLAM VIEW butt-joint glass. Engineered for 60- or 120-minute fire protection, these systems deliver maximum transparency with minimal sightlines, allowing light to flood interior spaces while meeting the most demanding safety codes. POLFLAM fire-resistive glass is impressively lightweight for easier handling and installation, without compromising strength or safety. Every panel is permanently laser-marked for full traceability and compliance, ensuring confidence from specification to completion. Designed for walls and full-height glazed partitions. POLFLAM STL offers the perfect balance of strength, style, and safety - built to perform and made to impress.

KEY FEATURES

- Two Fire-Rating Options – Available in both 60-minute and 120-minute fire protection
- Slim Steel Frames – Clean, minimal sightlines for a sleek, modern look
- Flexible Glazing Choices – Works with POLFLAM fire-resistive glass and POLFLAM VIEW butt-joint glass for uninterrupted views
- Maximum Daylight – Lets in more natural light for bright, open spaces
- Wide Range of Uses – Ideal for interior walls, doors, and full-height glazed partitions
- Strong & Durable – Rigid steel construction built to last
- Sound Control Options – Glass options available with enhanced acoustic performance
- Seamless Aesthetics – Uniform, refined lines that blend with any architectural style
- Tested & Certified – Meets recognized fire-safety standards for peace of mind

Maximum Framing / Glass Sizes:

Fire Rating	Max. Width Framing	Max. Height Framing	Glass Type	Max. Width Glass	Max. Height Glass	Max. Area Glass
60 minutes	Unlimited	depending on design requirements	POLFLAM 60	118 1/8 in. (3000 mm)	118 1/8 in. (3000 mm)	6975 sq. in. (4.50 m ²)
			POLFLAM VIEW 60	59 1/16 in. (1500 mm)	119 1/2 in. (3036 mm)	7053 sq. in. (4.55 m ²)
120 minutes	Unlimited	depending on design requirements	POLFLAM 120	118 1/8 in. (3000 mm)	118 1/8 in. (3000 mm)	6975 sq. in. (4.50 m ²)
			POLFLAM VIEW 120	59 1/16 in. (1500 mm)	119 1/2 in. (3036 mm)	7053 sq. in. (4.55 m ²)

Technical Specifications of Fire-Resistive Glass:

POLFLAM	60	VIEW 60	120	VIEW 120
Nominal thickness	1 3/16 in. (30 mm)	1 1/2 in. (38 mm)	1 5/8 in. (42 mm)	1 15/16 in. (50 mm)
Thickness tolerance	±1/16 in. (±2 mm)	±1/8 in. (±3 mm)	±1/8 in. (±3 mm)	±1/8 in. (±3 mm)
Weight	10.6 lbs/ft ² 52 kg/m ²	15.4 lbs/ft ² 75 kg/m ²	13.7 lbs/ft ² 67 kg/m ²	18.4 lbs/ft ² 90 kg/m ²
Fire-Resistance Rating	60 min	60 min	120 min	120 min
Certification	Intertek	Intertek	Intertek	Intertek
Listing Standard	UL 263, ASTM E119, CAN/ULC S101 and EN 1364-1	UL 263, ASTM E119, CAN/ULC S101 and EN 1364-1	UL 263, ASTM E119, CAN/ULC S101 and EN 1364-1	UL 263, ASTM E119, CAN/ULC S101 and EN 1364-1
Visible Light Transmittance	86%	84%	84%	81%
U-value [Btu/h·ft ² ·F]	0.64 (Winter) 0.60 (Summer)	0.62 (Winter) 0.58 (Summer)	0.52 (Winter) 0.49 (Summer)	0.51 (Winter) 0.48 (Summer)
STC Rating	42	42	45	46
Impact Safety Compliance	CPSC 16 CFR 1201 (Category II) ANSI Z97.1 (Class A)	CPSC 16 CFR 1201 (Category II) ANSI Z97.1 (Class A)	CPSC 16 CFR 1201 (Category II) ANSI Z97.1 (Class A)	CPSC 16 CFR 1201 (Category II) ANSI Z97.1 (Class A)
Storage and Transportation Temperature Range	-40°F to +122°F	-40°F to +122°F	-40°F to +122°F	-40°F to +122°F

Optional with Low-Iron glass

Precision Edge Detailing for Seamless Aesthetics

POLFLAM VIEW fire-resistive glass is fabricated with all edges ground smooth for safe handling and clean integration. A high-quality ceramic edge print, approximately 14 mm (0.55 in.) wide on the vertical edges, ensures a visually seamless connection between adjacent panes – ideal for modern, uninterrupted glazed wall applications.



POLFLAM and POLFLAM VIEW fire-resistive glass is permanently laser-marked for full traceability and compliance.

Listings:

Classified and labeled by INTERTEK

Spec ID 90002 - Design No. PSZ/FRG 60-04 (60 minute rating)

Spec ID 90002 - Design No. PSZ/FRG 120-04 (120 minute rating)

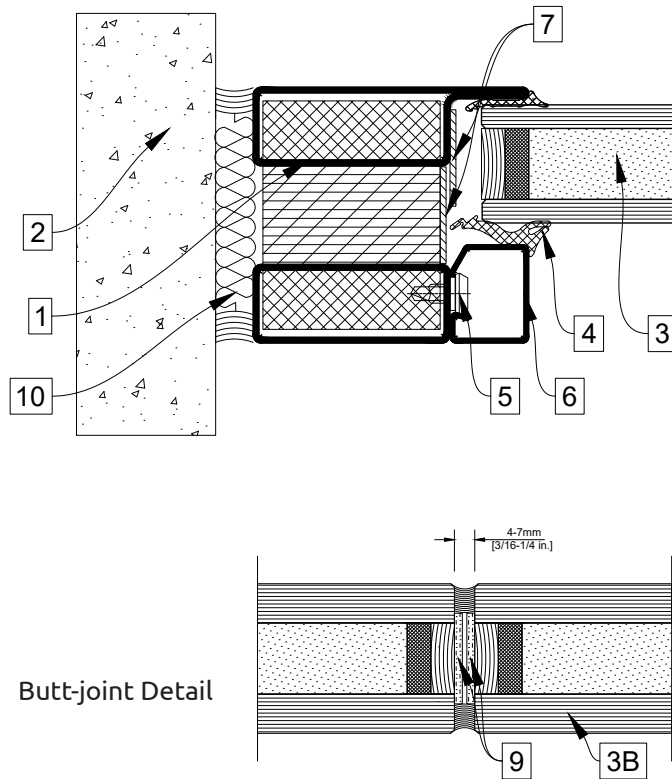
Tests performed in accordance with UL 263 / ASTM E119 / CAN/ULC S101



16 CFR 1201 II
ANSI Z97.1-2015
CAN/CGSB 12.1-2022
1/4 U A SGCC 10060
UL 10B | 10C | 263
D-H-T-60 | W-60

16 CFR 1201 II
ANSI Z97.1-2015
CAN/CGSB 12.1-2022
1/4 U A SGCC 10060
UL 263
W-120

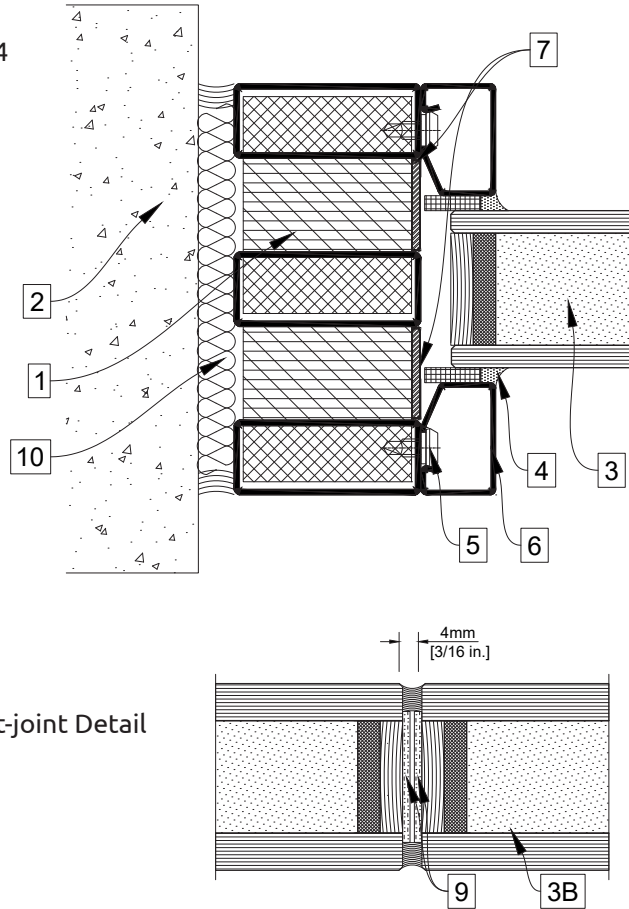
POLFLAM STL 60
Spec ID 90002
Design No. PSZ/FRG 60-04
(60 minute rating)



Butt-joint Detail

1. **CERTIFIED MANUFACTURER:** Polflam Sp. z o.o.
CERTIFIED PRODUCT: POLFLAM STL 60
Install POLFLAM STL 60 steel framing members with a nominal depth of 2-9/16 in. (65 mm). Secure the framing members to the steel studs of the supporting construction using No. 10, 4 in. long, self-drilling, self-tapping bugle-head screws, spaced 18 in. (457 mm) on center.
2. **SUPPORTING CONSTRUCTION:** Min. 1-hour fire rated wall assembly.
3. **FIRE RESISTANT GLAZING MATERIAL:** Install one of the following:
 - a. Install Listed 1 Hour Fire-Resistant Rated POLFLAM 60, 30 mm (1 3/16 in.) thick glazing panes in the following max. size:
POLFLAM 60 Max. Linear Dimension (width or height): 3000 mm (118 1/8 in.)
POLFLAM 60 Max. area: 4.50 m² (6975 sq. in.)
 - b. Install Listed 1 Hour Fire-Resistant Rated POLFLAM VIEW 60, 38 mm (1 1/2 in.) thick glazing panes in the following max. size:
POLFLAM VIEW 60 Max. Width: 1500 mm (59 1/16) by Max. Height: 3036 mm (119 1/2 in.),
POLFLAM VIEW 60 Max. area: 4.55 m² (7053 sq. in.)
- NOTE-** Double-glass units (DGU) and triple-glass units (TGU) incorporating tempered or laminated glazing are permitted. DGU and TGU configurations shall be installed with the non-fire-resistive glass oriented toward the unexposed side of the assembly only.
4. **GASKET OR TAPE:** Install EPDM glazing gaskets continuously around the glazing panes between the glazing beads on both sides, or apply self-adhering Kerafix 2000 glazing tape, nominal 5/8 in. (15 mm) wide x minimum 1/8 in. (3 mm) thick, between the glazing beads and the glazing material. Apply a continuous bead of 100% silicone sealant between the glazing beads and the glazing material.
5. **SCREWS:** Fasten glazing beads using 5/8 in. (15 mm) long pan-head screws attached to the steel framing members, spaced 12 in. (305 mm) on center.
6. **GLAZING BEADS:** Friction-fit nominal 16 GA steel glazing beads tightly along the perimeter, on the glazing material side, over the screws.
7. **INTUMESCENT TAPE:** Apply self-adhesive intumescent tape in framing pockets with exposed insulation, as well as in the chambers directly exposed to the glass.
8. **SETTING BLOCKS (Not Shown):** Install glazing panes on nominal 5 mm ± 2 mm (3/16 in. ± 3/32 in.) thick x 100 mm (3-15/16 in.) long hardwood or magnesium silicate setting blocks. The width of the setting blocks must be selected to match the glass thickness. Position setting blocks on steel support plates located 4 in. (100 mm) from each corner of the glazing.
9. **BUTT JOINT INTUMESCENT TAPE AND SEALANT (with item 3B):** Apply self-adhesive intumescent tape, 35 mm (1-3/8 in.) wide x 2 mm (1/16 in.) thick (ref: KERAFIX® FXL 200), on the vertical joints between the glazing panes, one on each pane. Apply neutral cure silicone sealant (ref: Dowsil 791) on vertical joints between the glazing panes.
10. **FILL, VOID, OR CAVITY MATERIAL:** Fill the void between the framing members and the wall opening with a third-party certified ASTM E814 or UL 1479 firestop system. The system must include mineral fiber insulation and caulk, providing a minimum 1-hour fire-resistance rating. As an example, use ceramic fiber insulation with a minimum density of 8 pcf (128 kg/m³) together with a suitable sealant, or apply a bead of 3M CP25 WB+ at the joint between the frame and the finished wall opening.
11. **CORNER TRANSITION (Not Shown):** Factory-attached corner transitions consist of nominal 16 GA steel facings filled with insulation. Remove all temporary support straps prior to installation. Secure the inner and outer corner sections to adjacent framing members using #8 x 3/4 in. (19 mm) screws through predrilled holes in the framing.
12. **END FILLER STRIP (Not Shown):** Nominal 16 GA steel strip with a J-shaped glazing bead, supplied with the steel framing member. After the angled void is filled with insulation, snap the strip into stainless steel clips that are riveted to the framing member.
13. **METAL SHEET (Not Shown) (Optional):** Where required, 0.032 in. (0.81 mm) thick steel or aluminum sheets may be installed between the gaskets and the fire-resistant glazing panes (single or IGU) on the unexposed, non-fire side. On the fire-exposed side, the sheet may be applied with a suitable adhesive directly to the visible glazing area only.
14. **METAL PANELS (Not Shown) (Optional):** If specified, assemblies of metal-faced insulated panels may be used. These consist of a minimum 1-3/16 in. (30 mm) thick insulation board with a 1/32-5/64 in. (1-2 mm) steel or aluminum facing sheet, combined with an additional 2-5/16 in. (58 mm) thick mineral wool layer at a minimum density of 3.7 pcf (60 kg/m³). The mineral wool must be secured with a 0.020 in. (0.5 mm) steel sheet welded or screw-fastened to the mullions and transoms at 4 in. (100 mm) on center. Acceptable insulation boards include calcium silicate boards (54 pcf / 870 kg/m³), cement-bonded glass-fiber reinforced boards (50 pcf / 800 kg/m³), or gypsum fiberboards (69 pcf / 1100 kg/m³), such as Promatect-H, Aestuver Firestop, or Knauf GIFAboard. Multiple thinner boards may be combined to achieve the required thickness. The insulation boards must then be faced with 1/32-5/64 in. (1-2 mm) steel, stainless steel, or aluminum sheets, secured using tested adhesives such as hybrid polymer adhesives or with mechanical fasteners.

POLFLAM STL 120
 Spec ID 90002
 Design No. PSZ/FRG 120-04
 (120 minute rating)



Butt-joint Detail

1. **CERTIFIED MANUFACTURER:** Polflam Sp. z o.o.
CERTIFIED PRODUCT: POLFLAM STL 120
 Install POLFLAM STL 120 steel framing members with a nominal depth of 4-5/16 in. (110 mm). Secure the framing members to the steel studs of the supporting construction using No. 10, 4 in. long, self-drilling, self-tapping bugle-head screws, spaced 18 in. (457 mm) on center.
2. **SUPPORTING CONSTRUCTION:** Min. 2-hour fire rated wall assembly.
3. **FIRE RESISTANT GLAZING MATERIAL:** Install one of the following:
 - a. Install Listed 2 Hour Fire-Resistant Rated POLFLAM 120, 42 mm (1 5/8 in.) thick glazing panes in the following max. size:
 POLFLAM 120 Max. Linear Dimension (width or height): 3000 mm (118 1/8 in.)
 POLFLAM 60 Max. area: 4.50 m² (6975 sq. in.)
 - b. Install Listed 2 Hour Fire-Resistant Rated POLFLAM VIEW 120, 50 mm (1 15/16 in.) thick glazing panes in the following max. size:
 POLFLAM VIEW 120 Max. Width: 1500 mm (59 1/16) by Max. Height: 3036 mm (119 1/2 in.),
 POLFLAM VIEW 120 Max. area: 4.55 m² (7053 sq. in.)

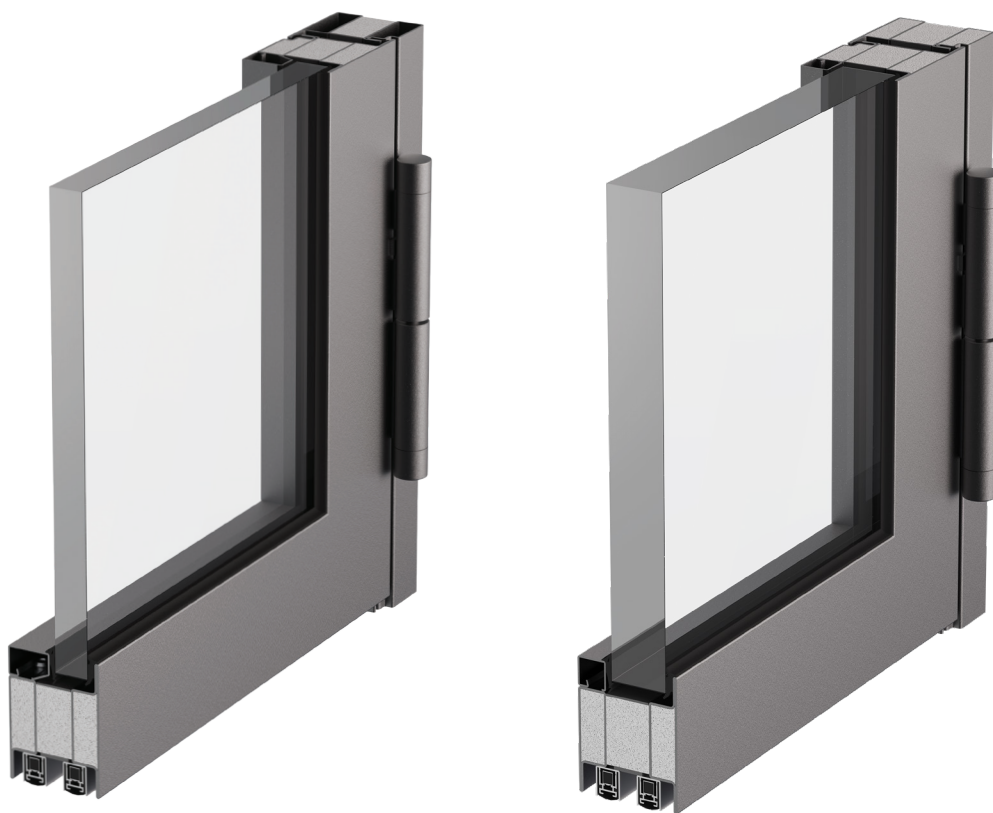
NOTE: Double-glass units (DGU) and triple-glass units (TGU) incorporating tempered or laminated glazing are permitted. DGU and TGU configurations shall be installed with the non-fire-resistive glass oriented toward the unexposed side of the assembly only.
4. **GASKET OR TAPE:** Install EPDM glazing gaskets continuously around the glazing panes between the glazing beads on both sides, or apply self-adhering Kerafix 2000 glazing tape, nominal 5/8 in. (15 mm) wide x minimum 1/8 in. (3 mm) thick, between the glazing beads and the glazing material. Apply a continuous bead of 100% silicone sealant between the glazing beads and the glazing material.
5. **SCREWS:** Fasten glazing beads using 5/8 in. (15 mm) long pan-head screws attached to the steel framing members, spaced 12 in. (305 mm) on center.
6. **GLAZING BEADS:** Friction-fit nominal 16 GA steel glazing beads tightly along the perimeter, on the glazing material side, over the screws.
7. **INTUMESCENT TAPE:** Apply self-adhesive intumescent tape in framing pockets with exposed insulation, as well as in the chambers directly exposed to the glass.
8. **SETTING BLOCKS (Not Shown):** Install glazing panes on nominal 5 mm ± 2 mm (3/16 in. ± 3/32 in.) thick x 100 mm (3-15/16 in.) long hardwood or magnesium silicate setting

9. **BUTT JOINT INTUMESCENT TAPE AND SEALANT (with item 3B):** Apply self-adhesive intumescent tape, 35 mm (1-3/8 in.) wide x 2 mm (1/16 in.) thick (ref: KERAFIX® FXL 200), on the vertical joints between the glazing panes, one on each pane. Apply neutral cure silicone sealant (ref: Dowsil 791) on vertical joints between the glazing panes.
10. **FILL, VOID, OR CAVITY MATERIAL:** Fill the void between the framing members and the wall opening with a third-party certified ASTM E814 or UL 1479 firestop system. The system must include mineral fiber insulation and caulk, providing a minimum 1-hour fire-resistance rating. As an example, use ceramic fiber insulation with a minimum density of 8 pcf (128 kg/m³) together with a suitable sealant, or apply a bead of 3M CP25 WB+ at the joint between the frame and the finished wall opening.
11. **CORNER TRANSITION (Not Shown):** Factory-attached corner transitions consist of nominal 16 GA steel facings filled with insulation. Remove all temporary support straps prior to installation. Secure the inner and outer corner sections to adjacent framing members using #8 x 3/4 in. (19 mm) screws through predrilled holes in the framing.
12. **END FILLER STRIP (Not Shown):** Nominal 16 GA steel strip with a J-shaped glazing bead, supplied with the steel framing member. After the angled void is filled with insulation, snap the strip into stainless steel clips that are riveted to the framing member.
13. **METAL SHEET (Not Shown) (Optional):** Where required, 0.032 in. (0.81 mm) thick steel or aluminum sheets may be installed between the gaskets and the fire-resistant glazing panes (single or IGU) on the unexposed, non-fire side. On the fire-exposed side, the sheet may be applied with a suitable adhesive directly to the visible glazing area only.
14. **METAL PANELS (Not Shown) (Optional):** If specified, assemblies of metal-faced insulated panels may be used. These consist of a minimum 1-15/16 in. (50 mm) thick insulation board with a 1/32-5/64 in. (1-2 mm) steel or aluminum facing sheet, combined with an additional 2-5/16 in. (58 mm) thick mineral wool layer at a minimum density of 3.7 pcf (60 kg/m³). The mineral wool must be secured with a 0.020 in. (0.5 mm) steel sheet welded or screw-fastened to the mullions and transoms at 4 in. (100 mm) on center. Acceptable insulation boards include calcium silicate boards (54 pcf / 870 kg/m³), cement-bonded glass-fiber reinforced boards (50 pcf / 800 kg/m³), or gypsum fiberboards (69 pcf / 1100 kg/m³), such as Promatect-H, Aestuver Firestop, or Knauf GIFAboard. Multiple thinner boards may be combined to achieve the required thickness. The insulation boards must then be faced with 1/32-5/64 in. (1-2 mm) steel, stainless steel, or aluminum sheets, secured using tested adhesives such as hybrid polymer adhesives or with mechanical fasteners.

NOTE: Details not to scale. The information provided herein is for reference only and is subject to change without notice.

POLFLAM STL DOOR Assembly

60 & 90 MINUTE FIRE-RATED STEEL DOOR SYSTEM



The POLFLAM STL DOOR Assembly combines precision-engineered steel framing with POLFLAM fire-resistive glass to deliver an elegant, high-performance solution for single- or double-leaf fire-rated doors. Suitable for interior use and exterior applications, these fully glazed doors provide exceptional transparency, durability, and certified fire protection up to 90 minutes, while maintaining a refined architectural appearance.

Tested and certified in accordance with UL 10C / UL 10B / CAN-ULC S104, the system offers architects and specifiers a versatile solution where clarity and safety are equally critical - from lobbies, corridors, and stair enclosures to partitioned office spaces and entrances.

KEY FEATURES

- Fire Ratings – 60 and 90 minutes per UL 10C / UL 10B / CAN-ULC S104
- Fully Glazed Design – Maximum daylight and visibility with slim steel framing
- Available as Single or Double Leaf Assemblies
- Optional Midrail in Door Leaf – Extended door height up to 121 1/2 in. (3086 mm)
- Optional 10 in. (254 mm) bottom rail to meet ADA requirements in North America
- Impact Safety Glazing – Meets ANSI Z97.1 (Class A) and CPSC 16 CFR 1201 (Category I & II)
- Temperature Rise Door (T-Rated) – Maximum 450 °F (250 °C) at 30 minutes
- Fire-Rated Hardware – Components listed to UL 10C for the required duration
- Cladding Options – Stainless steel finish 1/32 in. - 3/64 in. (1.0 mm - 1.2 mm) thick
- Certified Performance – Intertek Listed (Design No. 90004)
- Seamless Integration – Compatible with POLFLAM STL and POLFLAM STL CW framing systems

Tested Configurations & Maximum Sizes:

Fire Rating	Door Type	Max. Single Leaf Size (W x H)	Max. Pair Size (W x H)	Max. Glass Size (W x H)
60 minutes	Single / Double	47 7/8 in. x 96 1/2 in. (1215 mm x 2450 mm)	96 in. x 96 1/2 in. (2430 mm x 2450 mm)	42 1/4 in. x 90 1/2 in. (1073 mm x 2297 mm)
60 minutes with Midrail	Single / Double	47 7/8 in. x 121 1/2 in. (1215 mm x 3086 mm)	95 2/3 in. x 121 1/2 in. (2430 mm x 3086 mm)	Divided light 42 1/4 in. x 90 1/2 in. (1073 mm x 2297 mm)
90 minutes	Single / Double	42 1/2 in. x 96 1/2 in. (1080 mm x 2450 mm)	86 7/16 in. x 96 1/2 in. (2195 mm x 2450 mm)	36 1/4 in. x 90 1/2 in. (920 mm x 2297 mm)

Technical Specifications of Fire-Resistive Glass:

POLFLAM	60	90
Nominal thickness	1 3/16 in. (30 mm)	1 7/16 in. (37 mm)
Thickness tolerance	±1/16 in. (±2 mm)	±1/8 in. (±3 mm)
Weight	10.6 lbs/ft ² 52 kg/m ²	12.5 lbs/ft ² 61 kg/m ²
Fire-Resistance Rating	60 min	90 min
Certification	Intertek	Intertek
Listing Standard	UL 263, ASTM E119, CAN/ULC S101 and EN 1364-1	UL 263, ASTM E119, CAN/ULC S101, EN 1364-1, CAN / ULC S104, UL 10(b), UL 10(c), NFPA 252
Visible Light Transmittance	86%	86%
U-value [Btu/h·ft ² ·F]	0.64 (Winter) 0.60 (Summer)	0.57 (Winter) 0.53 (Summer)
STC Rating	42 dB	44 dB
Impact Safety Compliance	CPSC 16 CFR 1201 (Category II) ANSI Z97.1 (Class A)	CPSC 16 CFR 1201 (Category II) ANSI Z97.1 (Class A)
Storage and Transportation Temperature Range	-40°F to +122°F	-40°F to +122°F

Optional with Low-Iron glass

POLFLAM fire-resistive glass is permanently laser-marked for full traceability and compliance.

16 CFR 1201 II
ANSI Z97.1-2015
CAN/CGSB 12.1-2022
1/4 U A SGCC 10060
UL 10B | 10C | 263
D-H-T-60



16 CFR 1201 II
ANSI Z97.1-2015
CAN/CGSB 12.1-2022
1/4 U A SGCC 10060
UL 10B | 10C
D-H-T-90



Listings:

Classified and labeled by INTERTEK

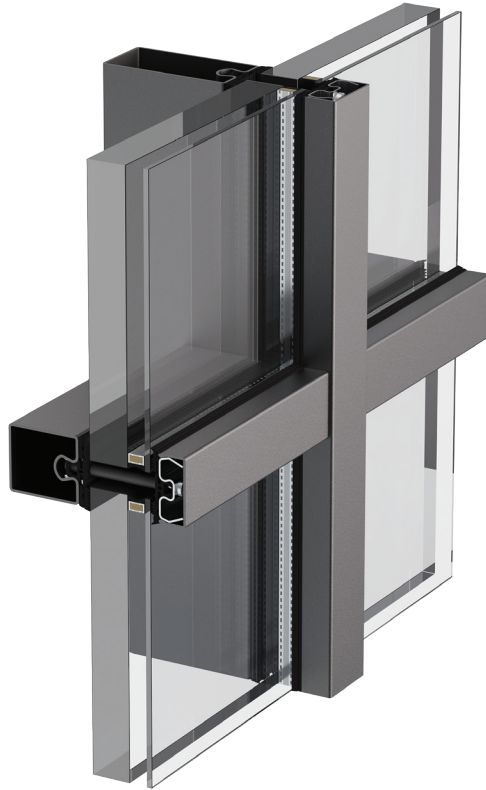
Design No. 90004

Tests performed in accordance with UL 10C, UL 10B, CAN/ULC S104



POLFLAM STL CW

60 & 120 MINUTE FIRE-RATED CURTAIN WALL SYSTEM



The POLFLAM STL CW 60 & 120 fire-rated curtain wall systems combine robust steel framing with the proven performance of POLFLAM fire-resistive glass to deliver a fully tested facade solution for today's demanding architectural projects.

Designed for exterior and large-span interior applications, POLFLAM STL CW offers outstanding fire containment, air and water resistance, and structural stability, all within a refined, slim-profile frame that maximizes daylight and transparency.

Engineered and tested to UL 263 / ASTM E119 / CAN-ULC S101, this system ensures reliable protection for facades, stair enclosures, atriums, and glazed partitions requiring up to 120 minutes of fire resistance - without compromising design freedom or visual continuity.

KEY FEATURES

- Fire Resistance Options – 60 min and 120 min
- Exterior & Interior CW System – Air and water-tested with proven drainage and thermal performance
- Large Glass Sizes – Up to 119 1/2 in. (3036 mm) height
- Compatible Glazing Options – POLFLAM 60 / 120 and POLFLAM VIEW 60 / 120 butt-joint glass (MONO and IGU)
- Minimal Sightlines – Slim, modern appearance for maximum daylight
- Structural Integrity – Engineered for tall spans and multi-story applications
- Tested & Certified - Meets recognized fire-safety standards for peace of mind
- Sleek Aesthetics – Precision-ground edges and uniform joint lines
- Sustainable Choice – Recyclable steel framing and eco-friendly glass composition

Maximum Framing / Glass Sizes:

Fire Rating	Max. Width Framing	Max. Height Framing	Glass Type	Max. Width Glass	Max. Height Glass	Max. Area Glass
60 minutes	Unlimited	depending on design requirements	POLFLAM 60	118 1/8 in. (3000 mm)	118 1/8 in. (3000 mm)	6975 sq. in. (4.50 m ²)
			POLFLAM VIEW 60	59 1/16 in. (1500 mm)	119 1/2 in. (3036 mm)	7053 sq. in. (4.55 m ²)
120 minutes	Unlimited	depending on design requirements	POLFLAM 120	118 1/8 in. (3000 mm)	118 1/8 in. (3000 mm)	6975 sq. in. (4.50 m ²)
			POLFLAM VIEW 120	59 1/16 in. (1500 mm)	119 1/2 in. (3036 mm)	7053 sq. in. (4.55 m ²)

Technical Specifications of Fire-Resistive Glass:

POLFLAM	60	VIEW 60	120	VIEW 120
Nominal thickness	1 3/16 in. (30 mm)	1 1/2 in. (38 mm)	1 5/8 in. (42 mm)	1 15/16 in. (50 mm)
Thickness tolerance	±1/16 in. (±2 mm)	±1/8 in. (±3 mm)	±1/8 in. (±3 mm)	±1/8 in. (±3 mm)
Weight	10.6 lbs/ft ² 52 kg/m ²	15.4 lbs/ft ² 75 kg/m ²	13.7 lbs/ft ² 67 kg/m ²	18.4 lbs/ft ² 90 kg/m ²
Fire-Resistance Rating	60 min	60 min	120 min	120 min
Certification	Intertek	Intertek	Intertek	Intertek
Listing Standard	UL 263, ASTM E119, CAN/ULC S101 and EN 1364-1	UL 263, ASTM E119, CAN/ULC S101 and EN 1364-1	UL 263, ASTM E119, CAN/ULC S101 and EN 1364-1	UL 263, ASTM E119, CAN/ULC S101 and EN 1364-1
Visible Light Transmittance	86%	84%	84%	81%
U-value [Btu/h·ft ² ·F]	0.64 (Winter) 0.60 (Summer)	0.62 (Winter) 0.58 (Summer)	0.52 (Winter) 0.49 (Summer)	0.51 (Winter) 0.48 (Summer)
STC Rating	42	42	45	46
Impact Safety Compliance	CPSC 16 CFR 1201 (Category II) ANSI Z97.1 (Class A)	CPSC 16 CFR 1201 (Category II) ANSI Z97.1 (Class A)	CPSC 16 CFR 1201 (Category II) ANSI Z97.1 (Class A)	CPSC 16 CFR 1201 (Category II) ANSI Z97.1 (Class A)
Storage and Transportation Temperature Range	-40°F to +122°F	-40°F to +122°F	-40°F to +122°F	-40°F to +122°F

Optional with Low-Iron glass

Precision Edge Detailing for Seamless Aesthetics

POLFLAM VIEW fire-resistive glass is fabricated with all edges ground smooth for safe handling and clean integration. A high-quality ceramic edge print, approximately 14 mm (0.55 in.) wide on the vertical edges, ensures a visually seamless connection between adjacent panes – ideal for modern, uninterrupted glazed wall applications.



POLFLAM and POLFLAM VIEW fire-resistive glass is permanently laser-marked for full traceability and compliance.

Listings:

Classified and labeled by INTERTEK

Spec ID 90002 - Design No. PSZ/FRG 60-03 (60 minute rating)

Spec ID 90002 - Design No. PSZ/FRG 120-03 (120 minute rating)

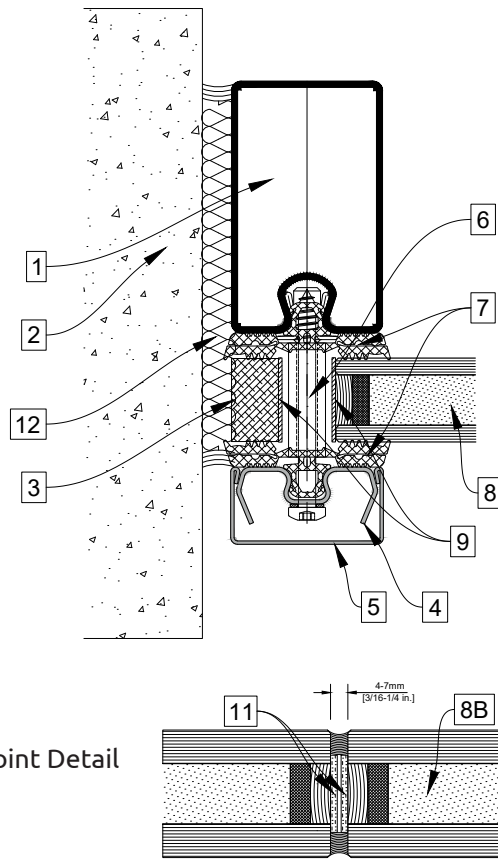
Tests performed in accordance with UL 263 / ASTM E119 / CAN/ULC S101



16 CFR 1201 II
ANSI Z97.1-2015
CAN/CGSB 12.1-2022
1/4 U A SGCC 10060
UL 10B | 10C | 263
D-H-T-60 | W-60

16 CFR 1201 II
ANSI Z97.1-2015
CAN/CGSB 12.1-2022
1/4 U A SGCC 10060
UL 263
W-120

POLFLAM STL CW 60
 Spec ID 90002
 Design No. PSZ/FRG 60-03
 (60 minute rating)



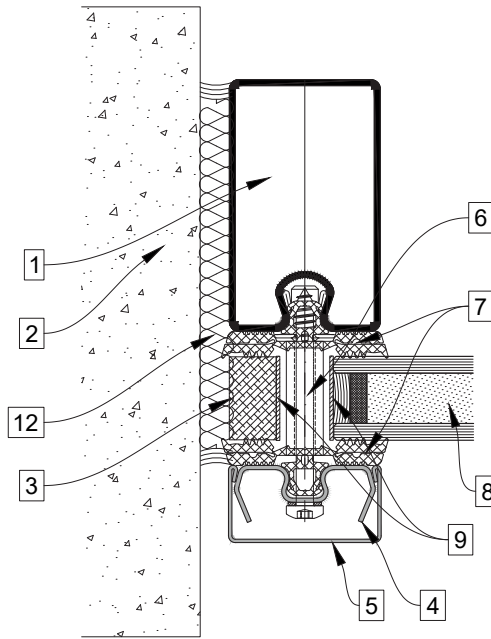
Butt-joint Detail

1. **CERTIFIED MANUFACTURER:** Polflam Sp. z o.o.
CERTIFIED PRODUCT: POLFLAM STL CW 60
 POLFLAM STL CW fire rated framing system, 1-3/4 in. (45 mm) or 2-3/8 in. (60 mm) wide with a nominal min. depth of 3 in. (75 mm). Cut lengths according to glazing size. Secure the frame to the wall with steel anchor brackets at the top and bottom of each vertical member. Installation of frames and brackets to be made in accordance with the installation instructions for this system.
2. **WALL ASSEMBLY:** Min. 1-hour fire rated wall assembly.
3. **PERIMETER FILLER:** Install nominal 3/4 in. (19 mm) wide x 3/4 in. (19 mm) deep x minimum 7/8 in. (22 mm) long perimeter fillers, made of hardwood or calcium silicate, with or without stainless steel or galvanized steel cladding. Fasten fillers to the steel framing members using No. 8 x 2-3/8 in. (60 mm) long self-tapping drywall screws.
4. **STAINLESS STEEL PRESSURE CAPS:** Install nominal 1-5/8 in. (42 mm) wide x 5/8 in. (17 mm) deep or nominal 2-1/4 in. (57 mm) wide x 5/8 in. (17 mm) deep stainless steel pressure caps onto the framing members. Fasten with pressure plate screws spaced 11-13/16 in. (300 mm) on center (O.C.). Stainless steel pressure caps are furnished with the framing system. Maintain a minimum 5/8 in. (15 mm) edge cover on the glazing.
5. **COVER CAPS:** Snap nominal 1-3/4 in. (45 mm) or 2-3/8 in. (60 mm) wide cover caps over the stainless steel pressure caps. Cover caps are furnished with the framing system.
6. **PRESSURE PLATE SCREWS:** Use nominal 1/4 in. (6 mm) diameter screws with a minimum length of 2-7/16 in. (62 mm). Longer screws may be required for thicker glazing. Screw types and sizes shall comply with the manufacturer's installation instructions. Locate screws 4 in. (102 mm) from each end of the framing member and space them at 11-13/16 in. (300 mm) on center (O.C.). Pressure plate screws are furnished with the framing system.
7. **EPDM GASKETS:** Install nominal 1-3/4 in. (45 mm) or 2-3/8 in. (60 mm) wide x 5/16 in. (8 mm) thick EPDM gaskets on the framing members and pressure caps to cushion and seal the glazing. EPDM gaskets are furnished with the framing system.
8. **FIRE RESISTANT GLAZING MATERIAL:** Install one of the following:
 - A. Install Listed 1 Hour Fire-Resistant Rated POLFLAM 60, 30 mm (1 3/16 in.) thick glazing panes in the following max. size:
 POLFLAM 60 Max. Linear Dimension (width or height): 3000 mm (118 1/8 in.)
 POLFLAM 60 Max. area: 4.50 m² (6975 sq. in.)
 - B. Install Listed 1 Hour Fire-Resistant Rated POLFLAM VIEW 60, 38 mm (1 1/2 in.) thick glazing panes in the following max. size:
 POLFLAM VIEW 60 Max. Width: 1500 mm (59 1/16 in.) by Max. Height: 3036 mm (119 1/2 in.), POLFLAM VIEW 60 Max. area: 4.55 m² (7053 sq. in.)

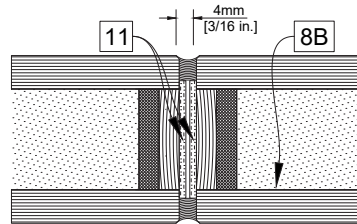
NOTE- Double-glass units (DGU) and triple-glass units (TGU) incorporating tempered or laminated glazing are permitted. DGU and TGU configurations shall be installed with the non-fire-resistant glass oriented toward the unexposed side of the assembly only.

9. **INTUMESCENT TAPE:** Install 5/64 in. (2 mm) thick self-adhesive intumescent tape (Ref: Kerafix® FXL 200) continuously along the perimeter of the glazing and on the edge of the perimeter filler adjacent to the glazing. Tape width shall equal the glazing thickness. Intumescent tape is furnished with the curtain wall profiles.
10. **SETTING BLOCKS (Not Shown):** Install glazing panes on nominal 5 mm ± 2 mm (3/16 in. ± 3/32 in.) thick x 100 mm (3-15/16 in.) long hardwood or magnesium silicate setting blocks. The width of the setting blocks must be selected to match the glass thickness. Position setting blocks on steel support plates located 6 in. (150 mm) from each corner of the glazing.
11. **BUTT JOINT INTUMESCENT TAPE AND SEALANT (with item 8B):** Apply self-adhesive intumescent tape, 25 mm (1 in.) wide x 2 mm (1/16 in.) thick (Ref: KERAFIX® FXL 200 or equivalent), to the vertical butt joints between glazing panes, one strip applied to each pane. Apply neutral-cure silicone sealant (Ref: DOWSIL® 791 or equivalent) continuously along the vertical joints between the glazing panes.
12. **FILL, VOID, OR CAVITY MATERIAL:** Install a third-party certified ASTM E814 or UL 1479 firestop system to fill the void between framing members and the wall opening. The system must include mineral fiber insulation and sealant, providing a minimum 1-hour fire-resistance rating. As an example, install ceramic fiber insulation with a minimum density of 8 pcf together with a suitable sealant, or apply a bead of 3M CP25 WB+ at the joint between the frame and the finished wall opening.
13. **METAL SHEET (Not Shown) (Optional):** Where required, 0.032 in. (0.81 mm) thick steel or aluminum sheets may be installed between the gaskets and the fire-resistant glazing panes (single or IGU) on the unexposed, non-fire side. On the fire-exposed side, the sheet may be applied with a suitable adhesive directly to the visible glazing surface only.
14. **METAL PANELS (Not Shown) (Optional):** If specified, assemblies of metal-faced insulated panels may be used. These consist of a minimum 1-3/16 in. (30 mm) thick insulation board with a 1/32-5/64 in. (1-2 mm) steel or aluminum facing sheet, together with an additional 2-5/16 in. (58 mm) thick mineral wool layer at a minimum density of 3.7 pcf (60 kg/m³). The mineral wool must be secured with a 0.020 in. (0.5 mm) steel sheet welded or screw-fastened to mullions and transoms at 4 in. (100 mm) on center. Acceptable insulation boards include calcium silicate boards at 54 pcf (870 kg/m³), cement-bonded glass-fiber reinforced boards at 50 pcf (800 kg/m³), or gypsum fiberboards at 69 pcf (1100 kg/m³), such as Promatect-H, Aestuver Firestop, or Knauf GIFAboard. Multiple thinner layers may be combined to achieve the required thickness. Facing sheets of 1/32-5/64 in. (1-2 mm) steel, stainless steel, or aluminum must be secured using tested adhesives such as hybrid polymer adhesives or with mechanical fasteners.

POLFLAM STL CW 120
 Spec ID 90002
 Design No. PSZ/FRG 120-03
 (120 minute rating)



Butt-joint Detail



1. **CERTIFIED MANUFACTURER:** Polflam Sp. z o.o.

CERTIFIED PRODUCT: POLFLAM STL CW 120

POLFLAM STL CW fire rated framing system, 1-3/4 in. (45 mm) or 2-3/8 in. (60 mm) wide with a nominal min. depth of 3 in. (75 mm). Cut lengths according to glazing size. Secure the frame to the wall with steel anchor brackets at the top and bottom of each vertical member. Installation of frames and brackets to be made in accordance with the installation instructions for this system.

2. **WALL ASSEMBLY:** Min. 2-hour fire rated wall assembly.
3. **PERIMETER FILLER:** Install nominal 3/4 in. (19 mm) wide x 3/4 in. (19 mm) deep x minimum 7/8 in. (22 mm) long perimeter fillers, made of hardwood or calcium silicate, with or without stainless steel or galvanized steel cladding. Fasten fillers to the steel framing members using No. 8 x 2-3/8 in. (60 mm) long self-tapping drywall screws.
4. **STAINLESS STEEL PRESSURE CAPS:** Install nominal 1-5/8 in. (42 mm) wide x 5/8 in. (17 mm) deep or nominal 2-1/4 in. (57 mm) wide x 5/8 in. (17 mm) deep stainless steel pressure caps onto the framing members. Fasten with pressure plate screws spaced 11-13/16 in. (300 mm) on center (O.C.). Stainless steel pressure caps are furnished with the framing system. Maintain a minimum 5/8 in. (15 mm) edge cover on the glazing.
5. **COVER CAPS:** Snap nominal 1-3/4 in. (45 mm) or 2-3/8 in. (60 mm) wide cover caps over the stainless steel pressure caps. Cover caps are furnished with the framing system.
6. **PRESSURE PLATE SCREWS:** Use nominal 1/4 in. (6 mm) diameter screws with a minimum length of 3-1/4 in. (83 mm). Longer screws may be required for thicker glazing. Screw types and sizes shall comply with the manufacturer's installation instructions. Locate screws 4 in. (102 mm) from each end of the framing member and space them at 11-13/16 in. (300 mm) on center (O.C.). Pressure plate screws are furnished with the framing system.
7. **EPDM GASKETS:** Install nominal 1-3/4 in. (45 mm) or 2-3/8 in. (60 mm) wide x 5/16 in. (8 mm) thick EPDM gaskets on the framing members and pressure caps to cushion and seal the glazing. EPDM gaskets are furnished with the framing system.
8. **FIRE RESISTANT GLAZING MATERIAL:** Install one of the following:
 - A. Install Listed 2 Hour Fire-Resistant Rated POLFLAM 120, 42 mm (1 5/8 in.), thick glazing panes in the following max. size:
 - POLFLAM 120 Max. Linear Dimension (width or height): 3000 mm (118 1/8 in.)
 - POLFLAM 120 Max. area: 4.50 m² (6975 sq. in.)
 - B. Install Listed 2 Hour Fire-Resistant Rated POLFLAM VIEW 120, 50 mm (1 15/16 in.), thick glazing panes in the following max. size:
 - POLFLAM VIEW 120 Max. Width: 1500 mm (59 1/16 in.) by Max. Height: 3036 mm (119 1/2 in.)
 - POLFLAM VIEW 120 Max. area: 4.55 m² (7053 sq. in.)

NOTE: Double-glass units (DGU) and triple-glass units (TGU) incorporating tempered or laminated glazing are permitted. DGU and TGU configurations shall be installed with the non-fire-resistive glass oriented toward the unexposed side of the assembly only.

9. **INTUMESCENT TAPE:** Install 5/64 in. (2 mm) thick self-adhesive intumescent tape (Ref: Kerafix® FXL 200) continuously along the perimeter of the glazing and on the edge of the perimeter filler adjacent to the glazing. Tape width shall equal the glazing thickness. Intumescent tape is furnished with the curtain wall profiles.
10. **SETTING BLOCKS (Not Shown):** Install glazing panes on nominal 5 mm ± 2 mm (3/16 in. ± 3/32 in.) thick x 100 mm (3-15/16 in.) long hardwood or magnesium silicate setting blocks. The width of the setting blocks must be selected to match the glass thickness. Position setting blocks on steel support plates located 6 in. (150 mm) from each corner of the glazing.
11. **BUTT JOINT INTUMESCENT TAPE AND SEALANT (with item 8B):** Apply self-adhesive intumescent tape, 35mm (1-3/8 in.) wide x 2mm (1/16 in.) thick (ref: KERAFIX® FXL 200), on the vertical joints between the glazing panes, one on each pane. Apply neutral cure silicone sealant (ref: Dowsil 791) on vertical joints between the glazing panes.
12. **FILL, VOID, OR CAVITY MATERIAL:** Install a third-party certified ASTM E814 or UL 1479 firestop system to fill the void between framing members and the wall opening. The system must include mineral fiber insulation and sealant, providing a minimum 1-hour fire-resistance rating. As an example, install ceramic fiber insulation with a minimum density of 8 pcf together with a suitable sealant, or apply a bead of 3M CP25 WB+ at the joint between the frame and the finished wall opening.
13. **METAL SHEET (Not Shown) (Optional):** Where required, 0.032 in. (0.81 mm) thick steel or aluminum sheets may be installed between the gaskets and the fire-resistant glazing panes (single or IGU) on the unexposed, non-fire side. On the fire-exposed side, the sheet may be applied with a suitable adhesive directly to the visible glazing surface only.
14. **METAL PANELS (Not Shown) (Optional):** If specified, assemblies of metal-faced insulated panels may be used. These consist of a minimum 1-15/16 in. (50 mm) thick insulation board with a 1/32-5/64 in. (1-2 mm) steel or aluminum facing sheet, together with an additional 2-5/16 in. (58 mm) thick mineral wool layer at a minimum density of 3.7 pcf (60 kg/m³). The mineral wool must be secured with a 0.020 in. (0.5 mm) steel sheet welded or screw-fastened to mullions and transoms at 4 in. (100 mm) on center. Acceptable insulation boards include calcium silicate boards at 54 pcf (870 kg/m³), cement-bonded glass-fiber reinforced boards at 50 pcf (800 kg/m³), or gypsum fiberboards at 69 pcf (1100 kg/m³), such as Promatect-H, Aestuver Firestop, or Knauf GIFAboard. Multiple thinner layers may be combined to achieve the required thickness. Facing sheets of 1/32-5/64 in. (1-2 mm) steel, stainless steel, or aluminum must be secured using tested adhesives such as hybrid polymer adhesives or with mechanical fasteners.

NOTE: Details not to scale. The information provided herein is for reference only and is subject to change without notice.

POLFLAM VIEW System

60 & 120 MINUTE FIRE-RESISTIVE GLAZING WALL

The POLFLAM VIEW system is a fire-rated glazed wall assembly designed for 60- and 120-minute ratings, offering a clean, uninterrupted appearance with no vertical mullions between adjacent fire-resistive glass units. The system installs directly into rated masonry or drywall partitions using specialized glass clamps, and it supports a variety of perimeter trim options.

POLFLAM VIEW Fire-Resistive Glass

POLFLAM VIEW features a high-quality ceramic edge print, approximately 14 mm (0.55 in.) wide on the vertical edges, to provide a seamless and visually uniform joint between adjacent lites.



KEY FEATURES

- Interior Use – Ideal for partitions, corridors, and other interior glazed applications
- Frameless Appearance – Clean, uninterrupted design with no vertical framing between glass panes (butt-glazed configuration)
- Fire-Rated – Tested and certified for 60-minute and 120-minute fire-resistance
- Hose Stream Tested – Meets fire-resistance criteria including impact and thermal shock performance
- Thermal Barrier – Effectively blocks radiant and conductive heat transfer
- Third-Party Certified – Listed and tested by Intertek to recognized North American standards
- Butt-Glazed System – No vertical mullions between glass units, ensuring maximum visibility and aesthetics
- Flexible Integration – Compatible with a wide range of perimeter trim and finishing options
- Maximum Transparency – Optimized for natural light and architectural openness
- Fast Lead Times – Competitive pricing with short production and delivery schedules

Maximum Framing / Glass Sizes:

Fire Rating	Max. Width Framing	Max. Height Framing	Glass Type	Max. Width Glass	Max. Height Glass	Max. Area Glass
60 minutes	Unlimited	120 in. (3.05 m)	POLFLAM VIEW 60	59 1/16 in. (1500 mm)	119 1/2 in. (3036 mm)	7053 sq. in. (4.55 m ²)
120 minutes	Unlimited	120 in. (3.05 m)	POLFLAM VIEW 120	59 1/16 in. (1500 mm)	119 1/2 in. (3036 mm)	7053 sq. in. (4.55 m ²)

Technical Specifications of Fire-Resistive Glass:

POLFLAM VIEW	60	120
Nominal thickness	1 1/2 in. (38 mm)	1 15/16 in. (50 mm)
Thickness tolerance	±1/8 in. (±3 mm)	±1/8 in. (±3 mm)
Weight	15.4 lbs/ft ² 75 kg/m ²	18.4 lbs/ft ² 90 kg/m ²
Fire-Resistance Rating	60 min	120 min.
Certification	Intertek	Intertek
Listing Standard	UL 263, ASTM E119, CAN/ULC S101 and EN 1364-1	UL 263, ASTM E119, CAN/ULC S101 and EN 1364-1
Visible Light Transmittance	84%	81%
U-Value [Btu/h·ft ² ·F]	0.62 (Winter) 0.58 (Summer)	0.51 (Winter) 0.48 (Summer)
STC Rating	42	46
Impact Safety Compliance	CPSC 16 CFR 1201 (Category II) ANSI Z97.1 (Class A)	CPSC 16 CFR 1201 (Category II) ANSI Z97.1 (Class A)
Storage & Transport Temperature	-40°F to +122°F	-40°F to +122°F

Optional with Low-Iron glass

Precision Edge Detailing for Seamless Aesthetics

POLFLAM VIEW fire-resistive glass is fabricated with all edges ground smooth for safe handling and clean integration. A high-quality ceramic edge print, approximately 14 mm (0.55 in.) wide on the vertical edges, ensures a visually seamless connection between adjacent panes – ideal for modern, uninterrupted glazed wall applications.

All POLFLAM VIEW fire-resistive glass is permanently laser-marked for full traceability and compliance.



Listings:

Classified and labeled by INTERTEK

Spec ID 89993 - Design No. PSZ/FGP 60-06 (60 minute rating)

Spec ID 89993 - Design No. PSZ/FGP 120-06 (120 minute rating)

Tests performed in accordance with UL 263 / ASTM E119 / CAN/ULC S101



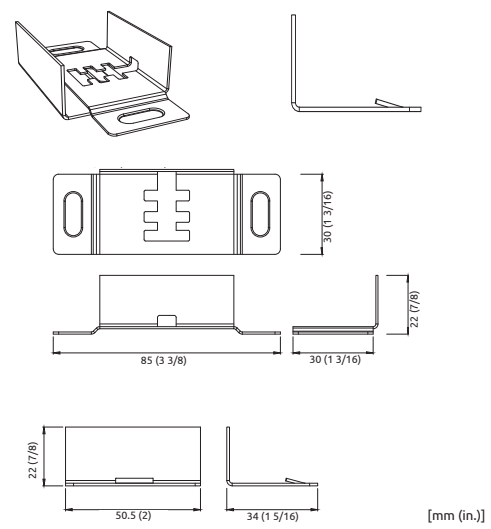
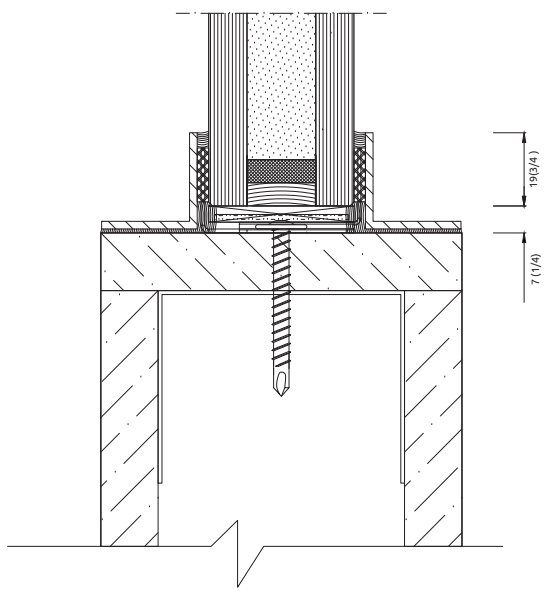
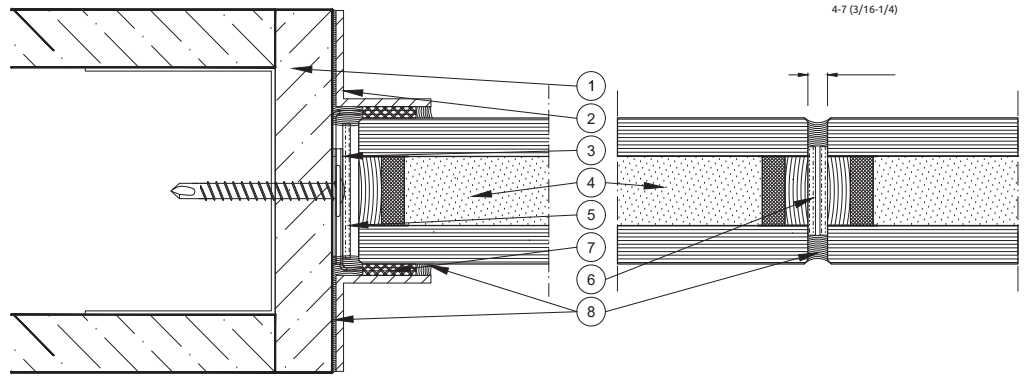
16 CFR 1201 II
ANSI Z97.1-2015
CAN/CGSB 12.1-2022
3/8 U A SGCC 10062
UL 263
W-60



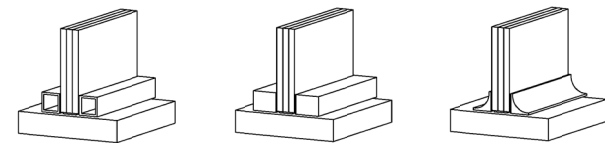
16 CFR 1201 II
ANSI Z97.1-2015
CAN/CGSB 12.1-2022
3/8 U A SGCC 10062
UL 263
W-120



POLFLAM VIEW 60
 Spec ID 89993
 Design No. PSZ/FGP 60-06
 (60 minute rating)



- SUPPORTING WALL ASSEMBLY:** Min. 1 hour fire rated masonry or dry-wall assembly.
- STEEL ANGLE:** Install 25 mm x 25 mm x 2 mm (1 in. x 1 in. x 3/32 in.) thick steel angle, perimetrically on all sides using non-fire-rated neutral silicone sealant (Ref: DOWSIL 791).
NOTE – Cross section may vary.
 Allowed materials: structural-grade steel, aluminum, engineered wood products (e.g., hardwood or plywood where applicable), PVC, epoxy composites.
 Allowed Finishes: enamel paint, powder coat or anodized.



- GLASS CLAMP:** Install 85 mm (3 3/8 in.) long x 40 mm (1 9/16 in.) wide Stainless Steel Glass Clamps using two Ø3.9 x 45 mm (#8 x 1 7/8 in.) screws with washer M5, 100 mm (3 5/16 in.) from the corners, and 325 mm (12 3/4 in.) max. on center (oc) distance horizontally and 354 mm (13 7/8 in.) max. oc distance vertically.
NOTE – Adjustable glass clamps are allowed to increase adequately on width to adapt to total glass pane thickness. This also applies when total thickness is increased by additional DGU or TGU.
- CERTIFIED MANUFACTURER:** Polflam Sp. z o.o.
CERTIFIED PRODUCT: POLFLAM VIEW 60

FIRE RESISTANT GLAZING PANES: Install Listed 1 Hour Fire-Resistance Rated POLFLAM VIEW 60, 38 mm (1 1/2 in.) thick glazing panes from Polflam Sp. z o.o. in the following max. size:

Max. Width: 1500 mm (59 1/16 in.)
Max. Height: 3036 mm (119 1/2 in.)
Max. Area: 4.55 m² (7053 sq. in.)

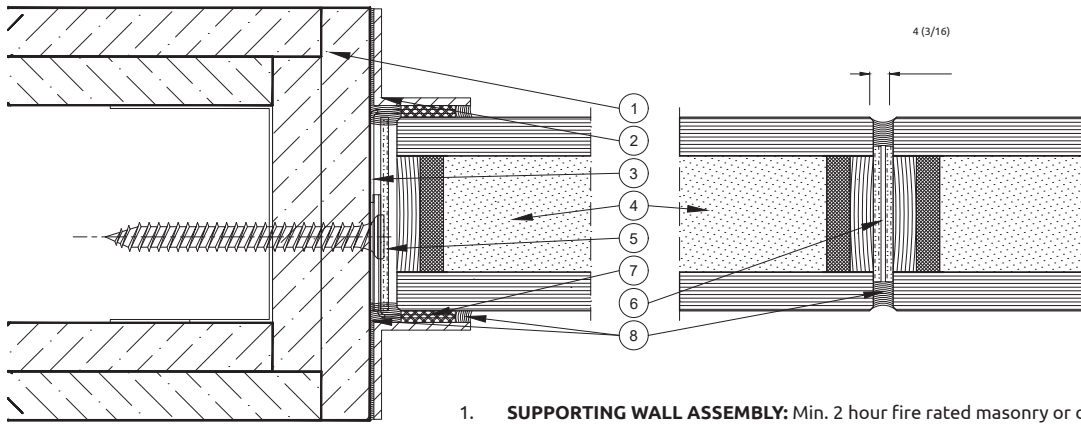
Apart from the original rectangular pane shape with vertical joint, alternative shapes are allowed on condition that: the whole shape is covered by maximal size allowed, consecutive panes will be only joint by vertical butt-joint so no external tension is distributed on glass edges, bottom edge of the glass pane is horizontal.

The glazing panes are installed on nominal 5 mm ± 2 mm (3/16 in. ± 3/32 in.) thick, 100 mm (3 7/8 in.) x 50 mm (1 15/16 in.) hardwood glazing supports, placed at 150 mm (5 7/8 in.) from the bottom corners of the glazing panes. Nominal butt-joint gap-width between the glazing panes is from 4 to 7 mm (3/16 in. to 1/4 in.).

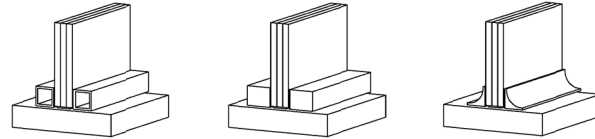
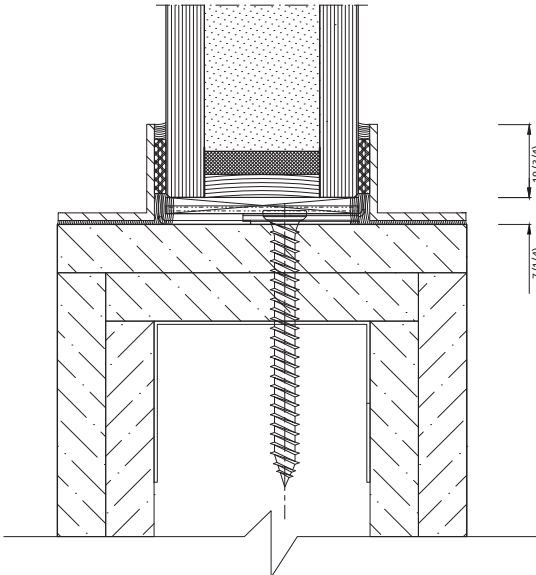
NOTE – DGU & TGU glazing panes are allowed. DGU & TGU glazing panes must be positioned with non-fire glass towards the unexposed side of the assembly.

- INTUMESCENT TAPE 1:** Install 35 mm (1 3/8 in.) wide x 2 mm (3/32 in.) thick intumescent strip (ref: KERAFIX® FXL 200) all around between the glazing pane edge and supporting construction.
- INTUMESCENT TAPE 2:** Install 25 mm (1 in.) wide x 2 mm (3/32 in.) thick intumescent strip (ref: KERAFIX® FXL 200) on the vertical joints between the glazing panes, one on each pane.
- CERAMIC TAPE:** Install 15 mm (19/32 in.) wide x 3 mm (1/8 in.) thick ceramic tape (Ref: KERAFIX® 2000) between the steel angles and glazing panes.
- SEALANT:** Install non-fire-rated neutral silicone sealant (Ref: DOWSIL 791) between steel angles and the supporting construction, between steel angles and the glazing panes, and on vertical joints between the glazing panes.

POLFLAM VIEW 120
 Spec ID 89993
 Design No. PSZ/FGP 120-06
 (120 minute rating)



- SUPPORTING WALL ASSEMBLY:** Min. 2 hour fire rated masonry or dry-wall assembly.
- STEEL ANGLE:** Install 25 mm x 25 mm x 2 mm (1 in. x 1 in. x 3/32 in.) thick steel angle, perimetrically on all sides using non-fire-rated neutral silicone sealant (Ref: DOWSIL 791).
NOTE – Cross section may vary.
 Allowed materials: structural-grade steel, aluminum, engineered wood products (e.g., hardwood or plywood where applicable), PVC, epoxy composites.
 Allowed Finishes: enamel paint, powder coat or anodized.



- GLASS CLAMP:** Install 85 mm (3 3/8 in.) long x 52 mm (2 1/16 in.) wide Stainless Steel Glass Clamps using two Ø3.9 x 45 mm (#8 x 1 7/8 in.) screws with washer M5, 100 mm (3 5/16 in.) from the corners, and 325 mm (12 3/4 in.) max. on center (oc) distance horizontally and 354 mm (13 7/8 in.) max. oc distance vertically.
NOTE – Adjustable glass clamps are allowed to increase adequately on width to adapt to total glass pane thickness. This also applies when total thickness is increased by additional DGU or TGU.

- CERTIFIED MANUFACTURER: Polflam Sp. z o.o.**
CERTIFIED PRODUCT: POLFLAM VIEW 120

FIRE RESISTANT GLAZING PANES: Install Listed 2 Hour Fire-Resistance Rated POLFLAM VIEW 120, 50 mm (1 15/16 in.) thick glazing panes from Polflam Sp. z o.o. in the following max. size:

Max. Width: 1500 mm (59 1/16 in.)

Max. Height: 3036 mm (119 1/2 in.)

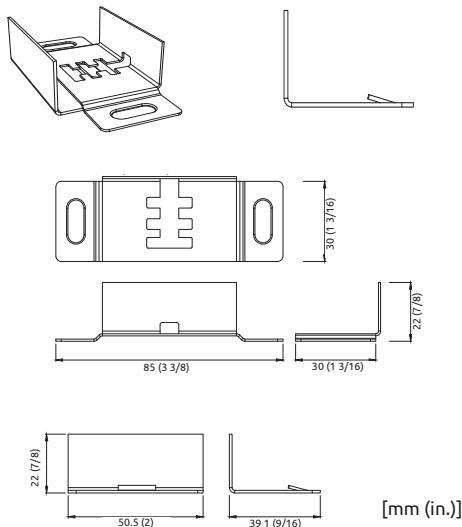
Max. Area: 4.55 m² (7053 sq. in.)

Apart from the original rectangular pane shape with vertical joint, alternative shapes are allowed on condition that: the whole shape is covered by maximal size allowed, consecutive panes will be only joint by vertical butt-joint so no external tension is distributed on glass edges, bottom edge of the glass pane is horizontal.

The glazing panes are installed on nominal 5 mm ± 2 mm (3/16 in. ± 3/32 in.) thick, 100 mm (3 7/8 in.) x 50 mm (1 15/16 in.) hardwood glazing supports, placed at 150 mm (5 7/8 in.) from the bottom corners of the glazing panes. Nominal butt-joint gap-width between the glazing panes is 4 mm (3/16 in.).

Note – DGU & TGU glazing panes are allowed. DGU & TGU glazing panes must be positioned with non-fire glass towards the unexposed side of the assembly.

- INTUMESCENT TAPE 1:** Install 50 mm (1 15/16 in.) wide x 2 mm (3/32 in.) thick intumescent strip (ref: KERAFIX® FXL 200) all around between the glazing pane edge and supporting construction.
- INTUMESCENT TAPE 2:** Install 35 mm (1 3/8 in.) wide x 2 mm (3/32 in.) thick intumescent strip (ref: KERAFIX® FXL 200) on the vertical joints between the glazing panes, one on each pane.
- CERAMIC TAPE:** Install 15 mm (19/32 in.) wide x 3 mm (1/8 in.) thick ceramic tape (Ref: KERAFIX® 2000) between the steel angles and glazing panes.
- SEALANT:** Install non-fire-rated neutral silicone sealant (Ref: DOWSIL 791) between steel angles and the supporting construction, between steel angles and the glazing panes, and on vertical joints between the glazing panes.



NOTE: Details not to scale. The information provided herein is for reference only and is subject to change without notice.

POLFLAM CLASSIC System

60 & 120 MINUTE FIRE-RESISTIVE GLAZING WALL



The POLFLAM CLASSIC 60 & 120 fire-rated systems brings together robust steel framing with the trusted performance of POLFLAM fire-resistive glass and POLFLAM VIEW butt-joint glass. Designed for 60- or 120-minute interior fire protection, POLFLAM CLASSIC delivers safety, and transparency with a refined architectural look. With single, double (DGU), and triple (TGU) glazing options, POLFLAM CLASSIC enhances acoustic performance while meeting the highest fire-safety standards. Every POLFLAM pane is permanently laser-marked for compliance and traceability, giving architects and builders complete confidence from specification to installation.

KEY FEATURES

- Fire Protection – 60 or 120 minutes, fully certified
- Classic Steel Profiles – Strong, timeless framing
- Glazing Options – Single, DGU, or TGU for better STC ratings
- Bright Interiors – Large panes maximize natural light
- Acoustic Comfort – Enhanced sound control choices
- Versatile Use – Perfect for interior walls and partitions
- Refined Aesthetics – Clean lines to fit any design
- Tested & Trusted – Meets leading fire-safety standards

Maximum Framing / Glass Sizes:

Fire Rating	Max. Width Framing	Max. Height Framing	GlassType	Max. Width Glass	Max. Height Glass	Max. Area Glass
60 minutes	Unlimited	depending on design requirements	POLFLAM 60	118 1/8 in. (3000 mm)	118 1/8 in. (3000 mm)	6975 sq. in. (4.50 m ²)
			POLFLAM VIEW 60	59 1/16 in. (1500 mm)	119 1/2 in. (3036 mm)	7053 sq. in. (4.55 m ²)
120 minutes	Unlimited	depending on design requirements	POLFLAM 120	118 1/8 in. (3000 mm)	118 1/8 in. (3000 mm)	6975 sq. in. (4.50 m ²)
			POLFLAM VIEW 120	59 1/16 in. (1500 mm)	119 1/2 in. (3036 mm)	7053 sq. in. (4.55 m ²)

Technical Specifications of Fire-Resistive Glass:

POLFLAM	60	VIEW 60	120	VIEW 120
Nominal thickness	1 3/16 in. (30 mm)	1 1/2 in. (38 mm)	1 5/8 in. (42 mm)	1 15/16 in. (50 mm)
Thickness tolerance	±1/16 in. (±2 mm)	±1/8 in. (±3 mm)	±1/8 in. (±3 mm)	±1/8 in. (±3 mm)
Weight	10.6 lbs/ft ² 52 kg/m ²	15.4 lbs/ft ² 75 kg/m ²	13.7 lbs/ft ² 67 kg/m ²	18.4 lbs/ft ² 90 kg/m ²
Fire-Resistance Rating	60 min	60 min	120 min	120 min
Certification	Intertek	Intertek	Intertek	Intertek
Listing Standard	UL 263, ASTM E119, CAN/ULC S101 and EN 1364-1	UL 263, ASTM E119, CAN/ULC S101 and EN 1364-1	UL 263, ASTM E119, CAN/ULC S101 and EN 1364-1	UL 263, ASTM E119, CAN/ULC S101 and EN 1364-1
Visible Light Transmittance	86%	84%	84%	81%
U-value [Btu/h·ft ² ·°F]	0.64 (Winter) 0.60 (Summer)	0.62 (Winter) 0.58 (Summer)	0.52 (Winter) 0.49 (Summer)	0.51 (Winter) 0.48 (Summer)
STC Rating	42	42	45	46
Impact Safety Compliance	CPSC 16 CFR 1201 (Category II) ANSI Z97.1 (Class A)	CPSC 16 CFR 1201 (Category II) ANSI Z97.1 (Class A)	CPSC 16 CFR 1201 (Category II) ANSI Z97.1 (Class A)	CPSC 16 CFR 1201 (Category II) ANSI Z97.1 (Class A)
Storage and Transportation Temperature Range	-40°F to +122°F	-40°F to +122°F	-40°F to +122°F	-40°F to +122°F

Optional with Low-Iron glass

Precision Edge Detailing for Seamless Aesthetics

POLFLAM VIEW fire-resistive glass is fabricated with all edges ground smooth for safe handling and clean integration. A high-quality ceramic edge print, approximately 14 mm (0.55 in.) wide on the vertical edges, ensures a visually seamless connection between adjacent panes – ideal for modern, uninterrupted glazed wall applications.



POLFLAM and POLFLAM VIEW fire-resistive glass is permanently laser-marked for full traceability and compliance.

Listings:

Classified and labeled by INTERTEK

Spec ID 89995 - Design No. PSZ/FGP 60-07 (60 minute rating)

Spec ID 89995 - Design No. PSZ/FGP 120-07 (120 minute rating)

Tests performed in accordance with UL 263 / ASTM E119 / CAN/ULC S101



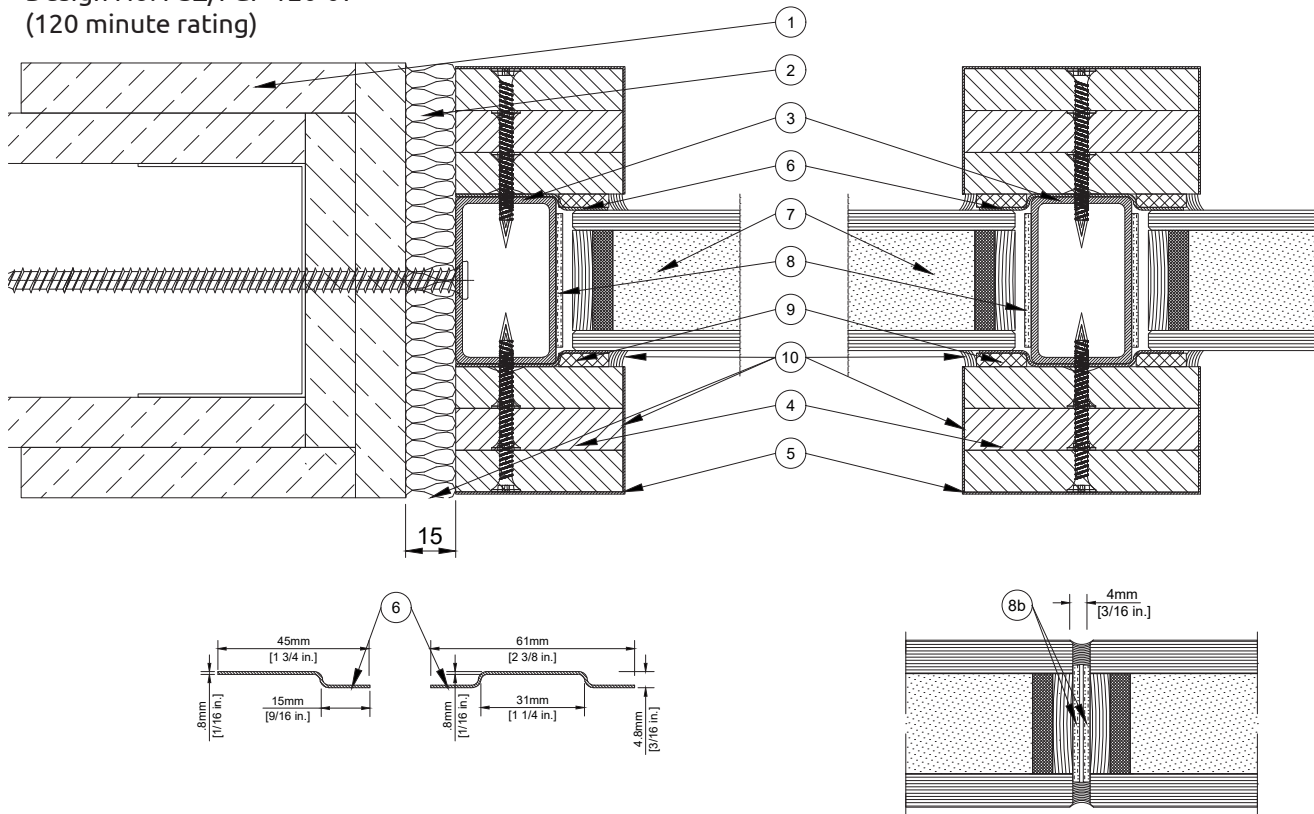
16 CFR 1201 II
ANSI Z97.1-2015
CAN/CGSB 12.1-2022
1/4 U A SGCC 10060
UL 10B | 10C | 263
D-H-T-60 | W-60



16 CFR 1201 II
ANSI Z97.1-2015
CAN/CGSB 12.1-2022
1/4 U A SGCC 10060
UL 263
W-120



POLFLAM Classic 120
Spec ID 89995
Design No. PSZ/FGP 120-07
(120 minute rating)



- 1. WALL ASSEMBLY:** Minimum 2-hour fire-resistance-rated masonry or gypsum wall assembly.
- 2. MINERAL WOOL:** Mineral wool insulation shall be tightly packed into the perimeter joint between the partition assembly and the supporting wall, with a maximum joint width of 15 mm (5/8 in.). Mineral wool shall have a minimum bulk density of 31 kg/m³ (2.5 pcf) and shall be noncombustible in accordance with ASTM E136.
- 3. STEEL PROFILE STRUCTURE:** Install steel tube profiles with a minimum depth of 50 mm (1-15/16 in.), width of 30 mm (1-3/16 in.), and thickness of 2 mm (3/32 in.). The tube profiles shall be continuously welded to form the structure. The assembly shall be secured to the supporting wall using 7.5 mm x 152 mm (5/16 in. x 6 in.) flat or countersunk head screws, located 100 mm (3-15/16 in.) from each end and spaced approximately 360 mm (14-3/16 in.) on center. Alternative materials such as stainless steel, mild steel, aluminum, or other non-combustible metals meeting ASTM E136 may be used. Finishes such as enamel paint, powder coating, or anodizing are permitted.
- 4. GYPSUM BOARD:** Install three layers of fire-resistant gypsum board on each side of steel profiles (Item 3). Mullions: 70 mm (2-3/4 in.) wide x 12.5 mm (1/2 in.) thick, Perimeter frame: 50 mm (1-15/16 in.) wide x 12.5 mm (1/2 in.) thick. Boards shall be Type X gypsum board, ASTM C1396/C1396M compliant (e.g., RIGIPS® PRO FIRE or equivalent). Fastening: inner layer: #6 x 1 in. (Ø3.5 mm x 25 mm) drywall screws, max. 500 mm (19-11/16 in.) oc, middle layer: #6 x 1-1/2 in. (Ø3.5 mm x 35 mm) drywall screws, max. 500 mm (19-11/16 in.) oc and outer layer: #6 x 2 in. (Ø3.5 mm x 50 mm) drywall screws, max. 300 mm (11-13/16 in.) oc.
- 5. COVEL PROFILE:** Install 37.5 mm (1-1/2 in.) deep x 70 mm (2-3/4 in.) wide C-shaped steel cover profile over the outermost layer of gypsum board (ASTM C1396, Type X) at mullions. Install 37.5 mm (1-1/2 in.) deep x 50 mm (1-15/16 in.) wide L-shaped steel cover profile over the outermost layer of gypsum board (ASTM C1396, Type X) at perimeter, including sill, jamb, and head members. Cover profiles shall be secured to the outer layer of gypsum board using neutral cure silicone sealant (ITEM 10).
- 6. GLASS CLAMP:** Install Z-shaped stainless steel glass clamps, 45 mm x 4.8 mm x 0.8 mm (1-3/4 in. x 3/16 in. x 0.0315 in.), at sill, jambs, and head members. Secure each clamp using one #8 x 1/2 in. (Ø4.2 mm x 13 mm) Pan Head Phillips self-tapping screw. Fasten clamps 100 mm (3 15/16 in.) from corners, with a maximum spacing of 339 mm (13 3/8 in.) oc horizontally and 371 mm (14 5/8 in.) oc vertically.
Install Omega-shaped stainless steel glass clamps, 61 mm x 4.8 mm x 10.8 mm (2-3/8 in. x 3/16 in. x 0.0315 in.), on horizontal and vertical mullions (field). Secure each clamp using #8 x 1/2 in. (Ø4.2 mm x 13 mm) Pan Head Phillips self-tapping screws. Fasten clamps 100 mm (3-15/16 in.) from corners, with a maximum spacing of 279 mm (11 in.) on center horizontally and 348 mm (13-11/16 in.) on center vertically.
- 7. CERTIFIED MANUFACTURER:** Polflam Sp. z o.o.
 - CERTIFIED PRODUCT:** POLFLAM 120
FIRE RESISTANT GLAZING PANES: Install Listed 2 Hour Fire-Resistant Rated

POLFLAM 120, 42 mm (1-5/8 in.), thick glazing panes in the following max. size:
POLFLAM 120 Max. Linear Dimension (width or height): 3000 mm (118-1/8 in.)
POLFLAM 120 Max. Area: 4.50 m² (6975 sq. in.)

b. CERTIFIED PRODUCT (Optional): POLFLAM VIEW 120

FIRE RESISTANT GLAZING PANES: Install Listed 2 Hour Fire-Resistant Rated POLFLAM VIEW 120, 50 mm (1-15/16 in.), thick glazing panes from in the following max. size:
POLFLAM VIEW 120 Max. Width: 1500 mm (59-1/16 in.) x Max. Height: 3036 mm (119-1/2 in.)
POLFLAM VIEW 120 Max. Area: 4.55 m² (7053 sq. in.)

SHAPED GLASS:

Shaped glass is permitted under the following conditions: The entire glass shape must fit within the maximum allowable dimensions of the tested assembly. No external forces or tension shall be applied to the edges of the glass. The bottom edge of the glass must remain horizontal.

Glazing panes shall be installed on nominal 3 mm to 6 mm (18 in. to 1/4 in.) thick magnesium silicate glass setting blocks, 100 mm x 42 mm (3 15/16 in. x 1 5/8 in.), placed 100 mm (3 15/16 in.) from the bottom corners of each glazing pane.

NOTE: Double-glazed (DGU) and triple-glazed (TGU) insulating glass units (IGUs) are permitted. When using DGU or TGU, the non-fire-rated glass must be positioned toward the unexposed side of the assembly.

8. INTUMESCENT TAPE:

- Install 40 mm x 2 mm (1-9/16 in. x 3/32 in.) intumescent tape (reference: PROMA-SEAL® LW) continuously all around the edge of the glass pane, between the glass and the steel tubes (ITEM 3).
- BUTT JOINT INTUMESCENT TAPE AND SEALANT:** (Optional): Apply self-adhesive intumescent tape, 35 mm (1-3/8 in.) wide x 2 mm (1/16 in.) thick (ref: KERAFIX® FXL 200), on the vertical joints between the glazing panes, one on each pane. Apply neutral cure silicone sealant (ref: Dowsil 791) on vertical joints between the glazing panes.

9. GLAZING TAPE: Install 15 mm wide with a thickness of 2 mm to 5 mm (9/16 in. x 1/16 in. to 3/16 in.) ceramic tape (reference: KERAFIX® 2000) between the perimeter gypsum board and the glazing panes, positioned over the glass clamps. The ceramic tape shall be installed continuously along the perimeter.

10. SEALANT: Apply a neutral cure silicone sealant (reference: DOWSIL 791) continuously at the following locations: Between the cover profiles and the supporting structure, between the cover profiles and the glazing panes, between the cover profiles and the gypsum board layers.

NOTE: Details not to scale. The information provided herein is for reference only and is subject to change without notice.

POLFLAM TIMBER

60 & 120 MINUTE FIRE-RATED TIMBER SYSTEM FOR MODERN ARCHITECTURE

Natural warmth meets proven fire performance

POLFLAM TIMBER systems combine the beauty of real wood with the reliability of POLFLAM fire-resistant glass, providing elegant transparency with certified fire protection up to 120 minutes.



KEY FEATURES

- Interior Use – Ideal for partitions, corridors, and other interior glazed applications
- Fire-resistance ratings: 60 min / 120 min
- Intertek-listed to UL 263 / ASTM E119 / CAN-ULC S101
- Clean, elegant laminated hardwood profiles with min 40.6 lb/ft³ (650 kg/m³) density
- Compatible with POLFLAM 60 & 120 and POLFLAM VIEW 60 & 120 butt-joint glass (MONO and IGU)
- For non-loadbearing interior partitions in masonry or drywall assemblies
- Hose-stream tested and approved for architectural use
- Fast lead times and flexible sizing
- Optional low-iron glass for maximum clarity

Maximum Framing / Glass Sizes:

Fire Rating	Max. Width Framing	Max. Height Framing	Glass Type	Max. Width Glass	Max. Height Glass	Max. Area Glass
60 minutes	Unlimited	depending on design requirements	POLFLAM 60	118 1/8 in. (3000 mm)	118 1/8 in. (3000 mm)	6975 sq. in. (4.50 m ²)
			POLFLAM VIEW 60	59 1/16 in. (1500 mm)	119 1/2 in. (3036 mm)	7053 sq. in. (4.55 m ²)
120 minutes	Unlimited	depending on design requirements	POLFLAM 120	118 1/8 in. (3000 mm)	118 1/8 in. (3000 mm)	6975 sq. in. (4.50 m ²)
			POLFLAM VIEW 120	59 1/16 in. (1500 mm)	119 1/2 in. (3036 mm)	7053 sq. in. (4.55 m ²)

Technical Specifications of Fire-Resistive Glass:

POLFLAM	60	VIEW 60	120	VIEW 120
Nominal thickness	1 3/16 in. (30 mm)	1 1/2 in. (38 mm)	1 5/8 in. (42 mm)	1 15/16 in. (50 mm)
Thickness tolerance	±1/16 in. (±2 mm)	±1/8 in. (±3 mm)	±1/8 in. (±3 mm)	±1/8 in. (±3 mm)
Weight	10.6 lbs/ft ² 52 kg/m ²	15.4 lbs/ft ² 75 kg/m ²	13.7 lbs/ft ² 67 kg/m ²	18.4 lbs/ft ² 90 kg/m ²
Fire-Resistance Rating	60 min	60 min	120 min	120 min
Certification	Intertek	Intertek	Intertek	Intertek
Listing Standard	UL 263, ASTM E119, CAN/ULC S101 and EN 1364-1	UL 263, ASTM E119, CAN/ULC S101 and EN 1364-1	UL 263, ASTM E119, CAN/ULC S101 and EN 1364-1	UL 263, ASTM E119, CAN/ULC S101 and EN 1364-1
Visible Light Transmittance	86%	84%	84%	81%
U-value [Btu/h·ft ² ·F]	0.64 (Winter) 0.60 (Summer)	0.62 (Winter) 0.58 (Summer)	0.52 (Winter) 0.49 (Summer)	0.51 (Winter) 0.48 (Summer)
STC Rating	42	42	45	46
Impact Safety Compliance	CPSC 16 CFR 1201 (Category II) ANSI Z97.1 (Class A)	CPSC 16 CFR 1201 (Category II) ANSI Z97.1 (Class A)	CPSC 16 CFR 1201 (Category II) ANSI Z97.1 (Class A)	CPSC 16 CFR 1201 (Category II) ANSI Z97.1 (Class A)
Storage and Transportation Temperature Range	-40°F to +122°F	-40°F to +122°F	-40°F to +122°F	-40°F to +122°F

Optional with Low-Iron glass

Precision Edge Detailing for Seamless Aesthetics

POLFLAM VIEW fire-resistive glass is fabricated with all edges ground smooth for safe handling and clean integration. A high-quality ceramic edge print, approximately 14 mm (0.55 in.) wide on the vertical edges, ensures a visually seamless connection between adjacent panes – ideal for modern, uninterrupted glazed wall applications.



POLFLAM and POLFLAM VIEW fire-resistive glass is permanently laser-marked for full traceability and compliance.

Listings:

Classified and labeled by INTERTEK

Spec ID 89997 – Design No. PSZ/FGP 60-08

Spec ID 89997 – Design No. PSZ/FGP 120-08

Tests performed in accordance with UL 263 / ASTM E119 / CAN/ULC S101



16 CFR 1201 II
ANSI Z97.1-2015
CAN/CGSB 12.1-2022
1/4 U A S GCC 10060
UL 10B | 10C | 263
D-HT-60 | W-60

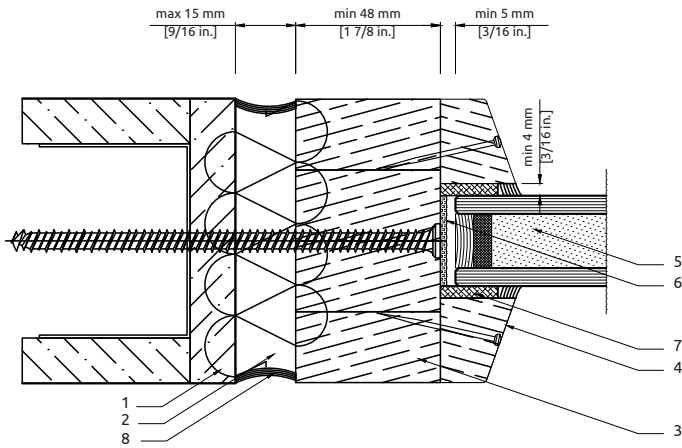


16 CFR 1201 II
ANSI Z97.1-2015
CAN/CGSB 12.1-2022
1/4 U A S GCC 10060
UL 263
W-120

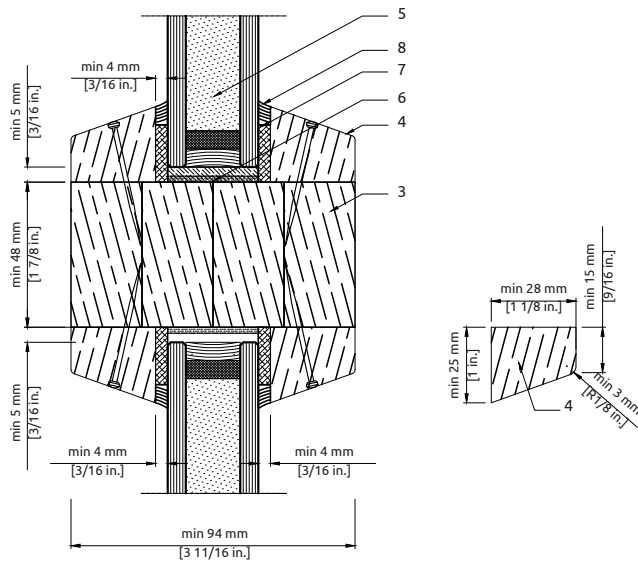


POLFLAM TIMBER 60
 Spec ID 89997
 Design No. PSZ/FGP 60-08
 (60 minute rating)

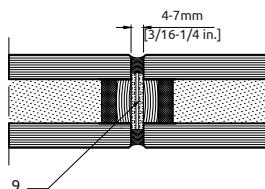
Jamb Details



Horizontal/Vertical Mullion Detail



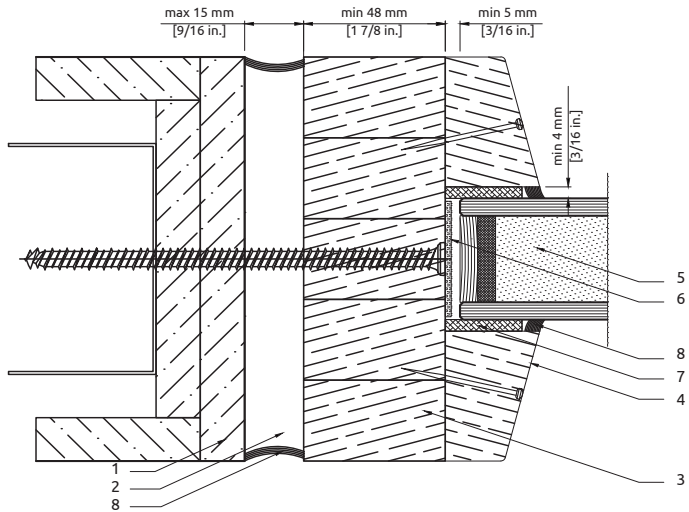
Butt-joint Detail



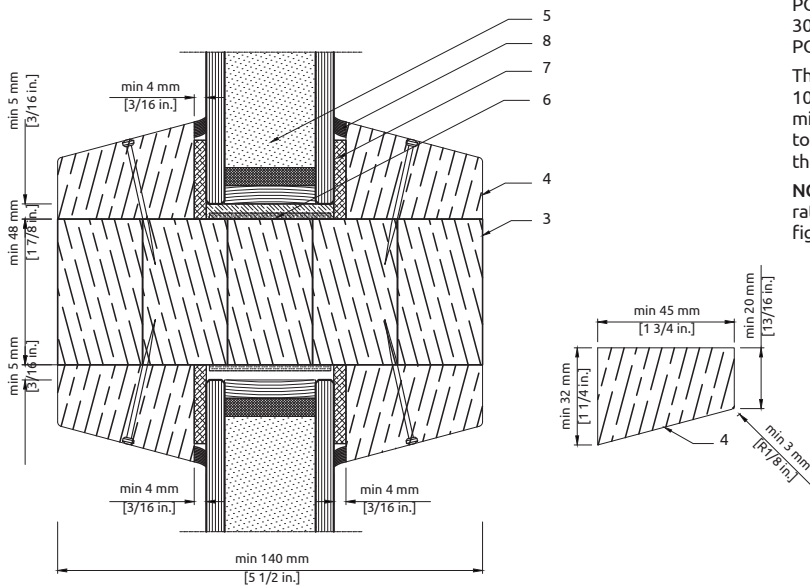
- WALL ASSEMBLY:** Minimum 1-hour fire-resistance-rated masonry or gypsum wall assembly.
- MINERAL WOOL:** Mineral wool insulation shall be tightly packed into the perimeter joint between the partition assembly and the supporting wall, with a maximum joint width of 15 mm (5/8 in.). Mineral wool shall have a minimum bulk density of 31 kg/m³ (2.5 pcf) and shall be noncombustible in accordance with ASTM E136.
- TIMBER PROFILE STRUCTURE:** The framing shall consist of laminated hardwood profiles with a minimum depth of 94 mm (3-11/16 in.) and width of 48 mm (1-7/8 in.), fabricated from oak or other hardwood species with a minimum density of 650 kg/m³ (40.6 lb/ft³). Joints in the hardwood structure shall be constructed as follows: L-joints shall be finger-jointed and secured with timber adhesive (Pattex or equivalent) and two Ø7.5 × 112 mm (5/16 × 4-3/8 in.) screws; Cross-joints shall be butt-jointed with timber adhesive, four Ø7.5 × 112 mm (5/16 × 4-3/8 in.) screws and one Ø10 × 100 mm (3/8 × 4 in.) dowel; T-joints shall be butt-jointed with timber adhesive, two Ø7.5 × 112 mm (5/16 × 4-3/8 in.) screws and one Ø10 × 50 mm (3/8 × 2 in.) dowel. The structure shall be anchored to the supporting wall with Ø7.5 × 152 mm (5/16 × 6 in.) screws, installed 100 mm (4 in.) from member ends and maximum 350 mm (14 in.) on center.
- GLAZING BEADS:** Laminated hardwood glazing beads, minimum 25 mm (1 in.) deep × 28 mm (1-1/8 in.) wide, fabricated from oak or other hardwood species with a minimum density of 650 kg/m³ (40.6 lb/ft³), shall be installed on both faces of the partition. Beads shall be secured to the timber profile structure with 16 Gauge × 2 in. (Ø1.6 × 50 mm) finish nails, driven at a 45° angle, located 50 mm (2 in.) from each end and maximum 150 mm (6 in.) on center.
- CERTIFIED MANUFACTURER:** Polflam Sp. z o.o.
 - CERTIFIED PRODUCT:** POLFLAM 60
FIRE RESISTANT GLAZING PANES: Install Listed 1 Hour Fire-Resistant Rated POLFLAM 60, 30 mm (1-3/16 in.), thick glazing panes in the following max. size:
 POLFLAM 60 Max. Linear Dimension (width or height): 3000 mm (118-1/8 in.)
 POLFLAM 60 Max. Area: 4.50 m² (6975 sq. in.)
 - CERTIFIED PRODUCT (Optional):** POLFLAM VIEW 60
FIRE RESISTANT GLAZING PANES: Install Listed 1 Hour Fire-Resistant Rated POLFLAM VIEW 60, 38 mm (1-1/2 in.), thick glazing panes in the following max. size:
 POLFLAM VIEW 60 Max. Width: 1500 mm (59-1/16 in.) × Max. Height: 3036 mm (119-1/2 in.)
 POLFLAM VIEW 60 Max. Area: 4.55 m² (7053 sq. in.)
 The glazing panes are installed on nominal 5 mm (3/16 in.) thick × 100 mm (4 in.) long setting blocks, fabricated from hardwood with a minimum density of 650 kg/m³ (40.6 lb/ft³), with the block width equal to the thickness of the glass. Blocks are positioned 100 mm (4 in.) from the bottom corners of the glazing panes.
NOTE – Double-glass units (DGU) and triple-glass units (TGU) incorporating tempered or laminated glazing are permitted. IGU and TGU configurations shall be installed with the non-fire-resistive glass oriented toward the unexposed side of the assembly only.
- INTUMESCENT TAPE:** Install intumescent tape (Ref: KERAFIX® FXL 200 or equivalent), minimum 2 mm (5/64 in.) thick, continuously around the perimeter between the glass edge and the hardwood profile structure (Item 3). The tape width shall be equal to the thickness of the glass.
- GLAZING TAPE:** Install 20 mm (13/16 in.) wide × 4 mm (5/32 in.) thick ceramic glazing tape (Ref: KERAFIX® 2000 or equivalent) continuously around the perimeter between the glass panes and the glazing beads, on both sides.
- SEALANT:** Install neutral-cure silicone sealant (Ref: DOWSIL® 791 or equivalent) between the hardwood profile structure and the supporting construction, and between the glazing beads and the glazing panes.
- BUTT-JOINT INTUMESCENT TAPE AND SEALANT (Optional):** Apply self-adhesive intumescent tape, 25 mm (1 in.) wide × 2 mm (1/16 in.) thick (Ref: KERAFIX® FXL 200 or equivalent), to the vertical butt joints between glazing panes, one strip applied to each pane. Apply neutral-cure silicone sealant (Ref: DOWSIL® 791 or equivalent) continuously along the vertical joints between the glazing panes.

POLFLAM TIMBER 120
 Spec ID 89997
 Design No. PSZ/FGP 120-08
 (120 minute rating)

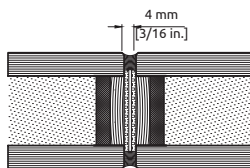
Jamb Details



Horizontal/Vertical Mullion Detail



Butt-joint Detail



- WALL ASSEMBLY:** Minimum 2-hour fire-resistance-rated masonry or gypsum wall assembly.
- MINERAL WOOL:** Mineral wool insulation shall be tightly packed into the perimeter joint between the partition assembly and the supporting wall, with a maximum joint width of 15 mm (5/8 in.). Mineral wool shall have a minimum bulk density of 31 kg/m³ (2.5 pcf) and shall be noncombustible in accordance with ASTM E136.
- TIMBER PROFILE STRUCTURE:** The framing shall consist of laminated hardwood profiles having a minimum depth of 140 mm (5-1/2 in.) and a minimum width of 48 mm (1-7/8 in.), fabricated from oak hardwood or other hardwood species of equal or greater density (≥650 kg/m³ [40.6 lb/ft³]), such as beech, maple, or ash. Joints in the timber structure shall be formed as follows: L-joints shall be finger-jointed and secured with timber adhesive (Pattex or equivalent) and two 7.5 × 112 mm (5/16 × 4-3/8 in.) screws; cross-joints shall be butt-jointed and secured with timber adhesive, six 7.5 × 112 mm (5/16 × 4-3/8 in.) screws, and two 10 × 100 mm (3/8 × 4 in.) dowels; T-joints shall be butt-jointed with timber adhesive, three 7.5 × 112 mm (5/16 × 4-3/8 in.) screws, and two 10 × 50 mm (3/8 × 2 in.) dowels.
 The structure shall be anchored to the supporting wall with 7.5 × 112 mm (5/16 × 4-3/8 in.) screws, installed 100 mm (4 in.) from member ends and maximum 500 mm (20 in.) on center.
- GLAZING BEADS:** Laminated hardwood glazing beads, minimum 32 mm (1-1/4 in.) deep by 45 mm (1-3/4 in.) wide, fabricated from oak or other hardwood species with a density ≥650 kg/m³ (40.6 lb/ft³), shall be installed on both faces of the partition. Beads shall be secured to the timber profile structure with 16 Gauge × 2 in. (Ø1.6 × 50 mm) finish nails driven at a 45° angle, located 50 mm (2 in.) from each end and maximum 150 mm (6 in.) on center.
- CERTIFIED MANUFACTURER:** Polflam Sp. z o.o.

a. **CERTIFIED PRODUCT:** POLFLAM 120

FIRE RESISTANT GLAZING PANES: Install Listed 2 Hour Fire-Resistant Rated POLFLAM 120, 42 mm (1-5/8 in.), thick glazing panes in the following max. size:
 POLFLAM 120 Max. Linear Dimension (width or height): 3000 mm (118-1/8 in.)
 POLFLAM 120 Max. Area: 4.50 m² (6975 sq. in.)

b. **CERTIFIED PRODUCT (Optional):** POLFLAM VIEW 120

FIRE RESISTANT GLAZING PANES: Install Listed 2 Hour Fire-Resistant Rated POLFLAM VIEW 120, 50 mm (1-15/16 in.), thick glazing panes from in the following max. size:
 POLFLAM VIEW 120 Max. Width: 1500 mm (59-1/16 in.) x Max. Height: 3036 mm (119-1/2 in.)
 POLFLAM VIEW 120 Max. Area: 4.55 m² (7053 sq. in.)

The glazing panes are installed on nominal 5 mm (3/16 in.) thick × 100 mm (4 in.) long setting blocks, fabricated from hardwood with a minimum density of 650 kg/m³ (40.6 lb/ft³), with the block width equal to the thickness of the glass. Blocks are positioned 100 mm (4 in.) from the bottom corners of the glazing panes.

NOTE – Double-glass units (DGU) and triple-glass units (TGU) incorporating tempered or laminated glazing are permitted. IGU and TGU configurations shall be installed with the non-fire-resistive glass oriented toward the unexposed side of the assembly only.

- INTUMESCENT TAPE:** Install intumescent tape (Ref: KERAFIX® FXL 200 or equivalent), minimum 2 mm (5/64 in.) thick, continuously around the perimeter between the glass edge and the hardwood profile structure (Item 3). The tape width shall be equal to the thickness of the glass.
- GLAZING TAPE:** Install 25 mm (1 in.) wide × 4 mm (5/32 in.) thick ceramic glazing tape (Ref: KERAFIX® 2000 or equivalent) continuously around the perimeter between the glass panes and the glazing beads, on both sides.
- SEALANT:** Install neutral-cure silicone sealant (Ref: DOWSIL® 791 or equivalent) between the hardwood profile structure and the supporting construction, and between the glazing beads and the glazing panes.
- BUTT-JOINT INTUMESCENT TAPE AND SEALANT (Optional):** Apply self-adhesive intumescent tape, 35 mm (1 3/8 in.) wide × 2 mm (1/16 in.) thick (Ref: KERAFIX® FXL 200 or equivalent), to the vertical butt joints between glazing panes, one strip applied to each pane. Apply neutral-cure silicone sealant (Ref: DOWSIL® 791 or equivalent) continuously along the vertical joints between the glazing panes.

NOTE: Details not to scale. The information provided herein is for reference only and is subject to change without notice.



PARTITIONS



WINDOWS
AND DOORS



FACADES

The information contained in this publication is for reference only.
Such information may be subject to change and products may be amended,
supplemented or withdrawn by POLFLAM Sp. z o.o. without prior notice.

All trademarks, logos and brand names mentioned in this publication
are registered trademarks of POLFLAM Sp. z o.o.

POLFLAM North America Inc
707 Skokie Blvd
Northbrook, IL 60043
T +1 833 3777362
sales@polflam.us

POLFLAM[®]
FIRE RATED SYSTEMS

VERSION US 032026